



Guide Price
£185,000

Freehold

2x  1x  1x 

**Windmill View,
Wrotham Road,
Meopham Green, Kent,
DA13**

OVER 60?

Secure this property
for up to **59% less!**

Wards
Helping you move forwards



Main features

- Ideal starter or buy to let investment
- Formerly a ground floor commercial residence with 2 basement rooms
- Property being sold with freehold
- Wonderful views of the famous windmill at Meopham Green
- Walking distance to highly rated pubs & restaurants

Accommodation

GROUND FLOOR

Entrance Lobby: 6'9 x 2'9 (2.06m x 0.84m)

Lounge: 15'3 x 15'0 (4.65m x 4.58m)

Bedroom 1: 13'3 x 9'4 (4.04m x 2.85m)

Bedroom 2: 9'9 x 8'2 (2.97m x 2.49m)

Inner Hallway

Kitchen: (L-shaped) 9'9 x 8'6 (2.97m x 2.59m) plus 5'9 x 4'8 (1.75m x 1.42m)

Bathroom: 9'6 x 7'3 (2.90m x 2.21m)

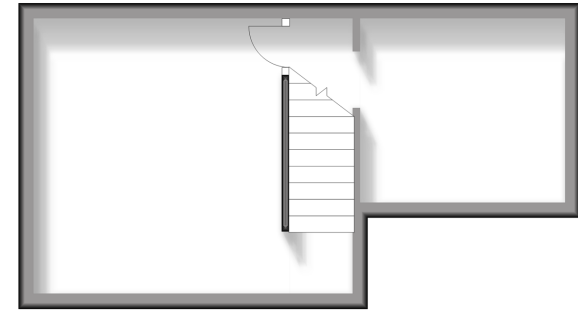
BASEMENT

Basement Room 1: 12'1 x 10'8 (3.69m x 3.25m)

Basement Room 2: 8'10 x 7'9 (2.69m x 2.36m)

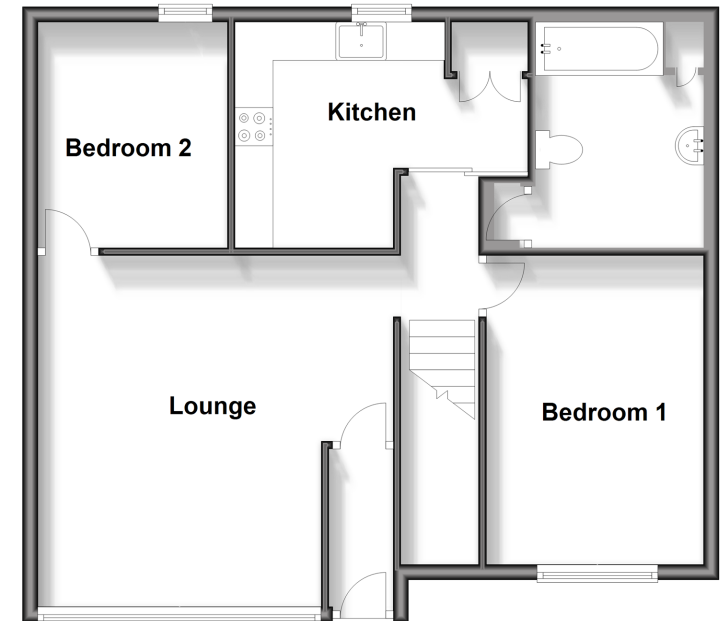
Basement

Approx. 21.8 sq. metres (234.5 sq. feet)



Ground Floor

Approx. 63.8 sq. metres (687.1 sq. feet)



Call Meopham - 01474 813100 ■ wardsof Kent.co.uk

- Legal advice should be taken to verify fixtures/fittings, planning, alterations and/or lease details
- Appliances & services are untested, dimensions are approximate and floor plans are not to scale
- Through a Homewise Home For Life Plan people aged 60+ can secure this property for up to 50% less, by purchasing a Lifetime Lease.



13324716/20251107/SB/KD