



**Price**  
**£675,000**

**Freehold**

4x  2x  3x 

**Round Street, Cobham,  
Kent, DA13**

**OVER 60?**

Secure this property  
for up to **59% less!**

*Wards*  
Helping you move forwards



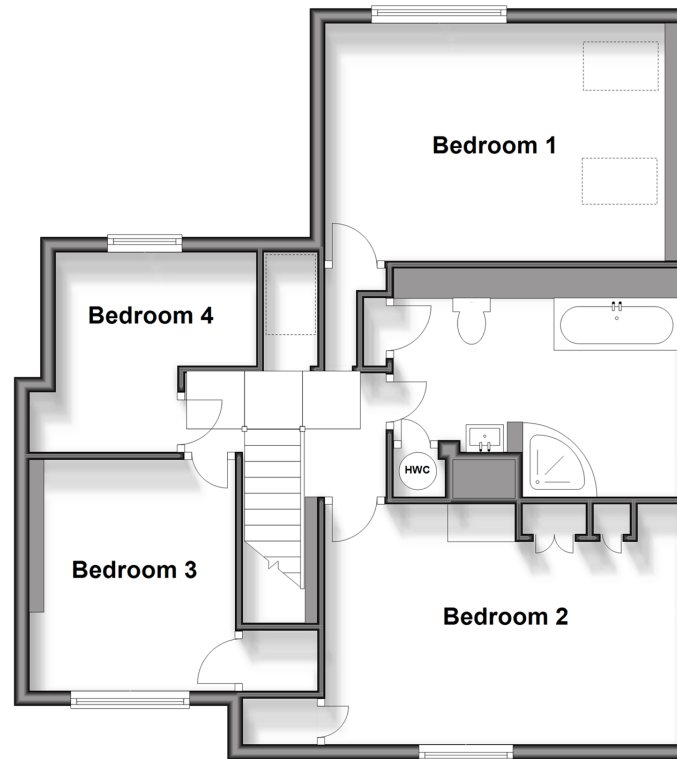
### Ground Floor

Approx. 67.4 sq. metres (725.2 sq. feet)



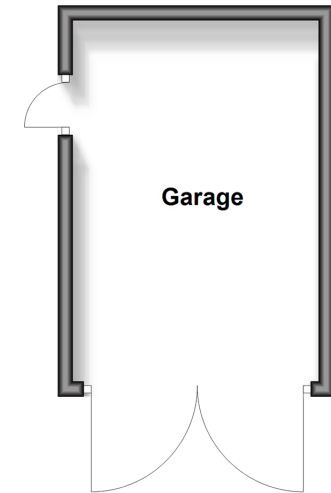
### First Floor

Approx. 69.4 sq. metres (747.5 sq. feet)



### Outbuilding

Approx. 15.3 sq. metres (164.7 sq. feet)



## Accommodation

### GROUND FLOOR

Hallway  
Lounge: 12'1 x 9'3 (3.69m x 2.82m)  
Kitchen: 14'10 x 9'10 (4.52m x 3.00m)  
Utility Room: 8'7 x 4'11 (2.62m x 1.50m)  
Cloakroom: 5'3 x 5'0 (1.60m x 1.53m)  
Dining Area: 12'11 x 9'4 (3.94m x 2.85m)  
Snug: 14'10 x 11'4 (4.52m x 3.46m)

### FIRST FLOOR

Landing  
Bedroom 1: 14'11 x 10'4 (4.55m x 3.15m)  
Bedroom 2: 15'10 x 10'2 (4.83m x 3.10m)  
Bedroom 3: 9'8 x 9'3 (2.95m x 2.82m)  
Bedroom 4: 8'9 x 8'8 (2.67m x 2.64m)

Bathroom: 12'6 x 8'2 (3.81m x 2.49m)

### OUTBUILDING

Garage

### OUTSIDE

Driveway  
Front Garden  
Rear Garden



## Main features

- Walkers paradise with fields nearby
- Close to Meopham amenities
- Short drive to Sole Street Station
- Beautiful countryside setting with stunning views from master bedroom
- Great outside space for family and friends, to enjoy and take in the countryside living



### Nearest Schools

Primary Schools: Cobham Primary 1.0 miles, Meopham Community Primary 1.3 miles, Singlewell Primary 1.4 miles

Secondary Schools: Helen Allison School 1.3 miles, Cobham Hall 1.5 miles, Meopham School 1.7 miles



### Transport Information

Train Stations: Sole Street 0.5 miles, Meopham 0.7 miles, Longfield 3.3 miles



### Address

Round Street, Cobham, Kent, DA13



### Directions

For directions to this property please contact us.





Call Meopham Branch 01474 813100 ■ [wardsofkent.co.uk](https://wardsofkent.co.uk)



- Legal advice should be taken to verify fixtures/fittings, planning, alterations and/or lease details
- Appliances & services are untested, dimensions are approximate and floor plans are not to scale
- Through a Homewise Home For Life Plan people aged 60+ can secure this property for up to 59% less, by purchasing a Lifetime Lease.



13325310/20241128/KD/KD