



Price
£700,000

Freehold

4x  1x  2x 

**Beechwood Drive,
Culverstone, Kent, DA13**

OVER 60?

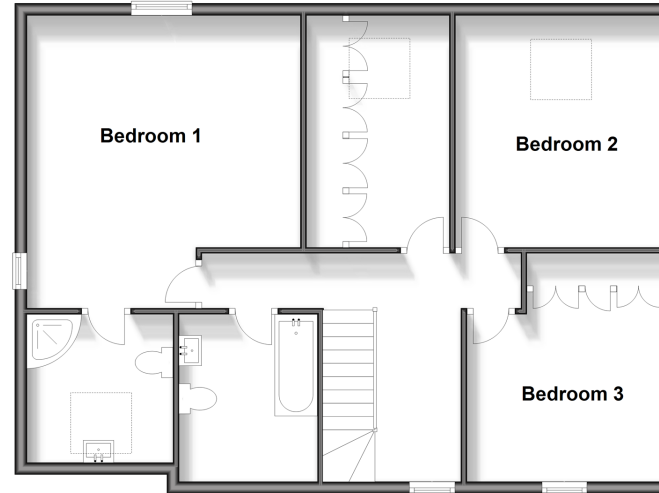
Secure this property
for up to **59% less!**

Wards
Helping you move forwards

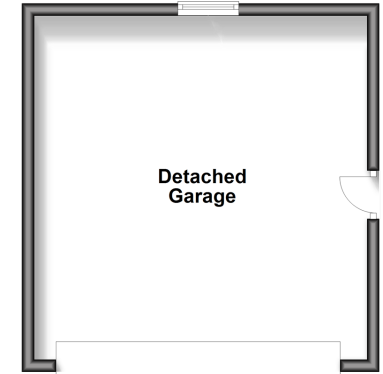
Ground Floor
Approx. 80.6 sq. metres (867.3 sq. feet)



First Floor
Approx. 79.9 sq. metres (859.9 sq. feet)



Outbuilding
Approx. 31.1 sq. metres (335.1 sq. feet)



Accommodation

GROUND FLOOR

Hallway
Cloakroom: 8'7 x 2'11 (2.62m x 0.89m)
Lounge: 22'9 x 12'6 (6.94m x 3.81m)
Office: (L-shaped) 12'4 x 7'2 (3.76m x 2.19m) plus 3'4 x 3'5 (1.02m x 1.04m)
Dining Area: 12'6 x 11'4 (3.81m x 3.46m)
Kitchen: 12'3 x 10'3 (3.74m x 3.13m)
Utility Room: 11'4 x 4'10 (3.46m x 1.47m)

FIRST FLOOR

Landing
Bedroom 1: (L-shaped) 15'11 x 9'0 (4.85m x 2.75m) plus 12'7 x 5'6 (3.84m x 1.68m)
Ensuite Shower Room: 7'10 x 7'5 (2.39m x 2.26m)
Bedroom 2: 12'8 x 11'4 (3.86m x 3.46m)
Bedroom 3: 10'7 x 10'4 (3.23m x 3.15m)
Bedroom 4: 12'8 x 5'8 (3.86m x 1.73m)
Bathroom: 9'0 x 7'5 (2.75m x 2.26m)

OUTBUILDING

Detached Garage: 18'0 x 17'11 (5.49m x 5.46m)

OUTSIDE

Driveway
Rear Garden



Main features

- Detached double garage with ample driveway space
- Spacious layout with plenty of entertaining areas
- Close to local amenities and schools
- Attractive gardens maintained to an impeccable standard
- Impressive condition throughout with high quality finishes



Nearest Schools

Primary and Secondary Schools: Vigo Village School 0.3 miles, Culverstone Green Primary 0.6 miles, Trottiscliffe C of E Primary 1.3 miles, Meopham School 2.2 miles, Helen Allison School 2.7 miles, Grange Park School 3.2 miles



Transport Information

Train Stations: Sole Street 3.3 miles, Meopham 3.4 miles, Borough Green & Wrotham 3.7 miles



Address

Beechwood Drive, Culverstone, Kent, DA13



Directions

For directions to this property please contact us.



Call Meopham Branch 01474 813100 ■ wardsofkent.co.uk



■ Legal advice should be taken to verify fixtures/fittings, planning, alterations and/or lease details ■ Appliances & services are untested, dimensions are approximate and floor plans are not to scale
■ Through a Homewise Home For Life Plan people aged 60+ can secure this property for up to 59% less, by purchasing a Lifetime Lease.



13326057/20250106/TT/KD