



Price

£600,000

Freehold

3x  1x  2x 

**Harvel Street, Harvel,
Meopham, Kent, DA13**

OVER 60?

Secure this property
for up to **59% less!**

Wards
Helping you move forwards



Main features

- No onward chain
- Off street parking and benefit of detached garage
- Surrounded by areas of natural beauty
- Stunning family home with character features and wood burning stove
- Countryside setting, perfect for walks in summer and winter

Accommodation

GROUND FLOOR

- Lounge: 15'5 x 12'2 (4.70m x 3.71m)
- Dining Room: 15'4 x 13'11 (4.68m x 4.24m)
- Kitchen: (L-shaped) 10'10 x 9'4 (3.30m x 2.85m) plus 6'4 x 4'7 (1.93m x 1.40m)
- Utility Room: 11'10 x 6'1 (3.61m x 1.86m)
- Cloakroom: 5'3 x 3'2 (1.60m x 0.97m)

FIRST FLOOR

- Landing
- Bedroom 1: 15'6 x 14'0 (4.73m x 4.27m)
- Bedroom 2: 15'5 x 12'3 (4.70m x 3.74m)
- Bedroom 3: 9'9 x 7'9 (2.97m x 2.36m)
- Bathroom: 7'4 x 6'7 (2.24m x 2.01m)

OUTBUILDING

- Workshop

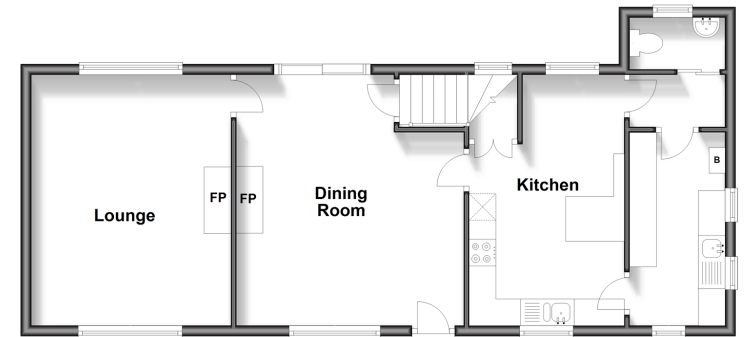
OUTSIDE

- Garage
- Driveway
- Front Garden
- Rear Garden

Call Meopham - 01474 813100 ■ wardsof Kent.co.uk

- Legal advice should be taken to verify fixtures/fittings, planning, alterations and/or lease details
- Appliances & services are untested, dimensions are approximate and floor plans are not to scale
- Through a Homewise Home For Life Plan people aged 60+ can secure this property for up to 59% less, by purchasing a Lifetime Lease.

Ground Floor
Approx. 62.7 sq. metres (674.7 sq. feet)



First Floor
Approx. 52.4 sq. metres (564.5 sq. feet)



Outbuilding
Approx. 20.1 sq. metres (216.9 sq. feet)



13326026/20241022/SB/KD