



Price
£700,000

Freehold

4x  2x  2x 

**Walnut Tree Way,
Meopham, Kent, DA13**

OVER 60?

Secure this property
for up to **59% less!**

Wards
Helping you move forwards



Main features

- Situated at the end of a cul-de-sac
- Large driveway for multiple vehicles and garage
- Short walk to Meopham Station ideal for commuters
- Exciting potential to improve internally
- Popular location within short drive to M20, M25 & A2 road links

Accommodation

GROUND FLOOR

- Hallway
- Cloakroom: 6'1 x 3'5 (1.86m x 1.04m)
- Lounge: 25'6 x 14'1 (7.78m x 4.30m)
- Dining Room: 11'7 x 9'8 (3.53m x 2.95m)
- Kitchen: 11'8 x 9'7 (3.56m x 2.92m)
- Utility Room: 9'4 x 6'10 (2.85m x 2.08m)

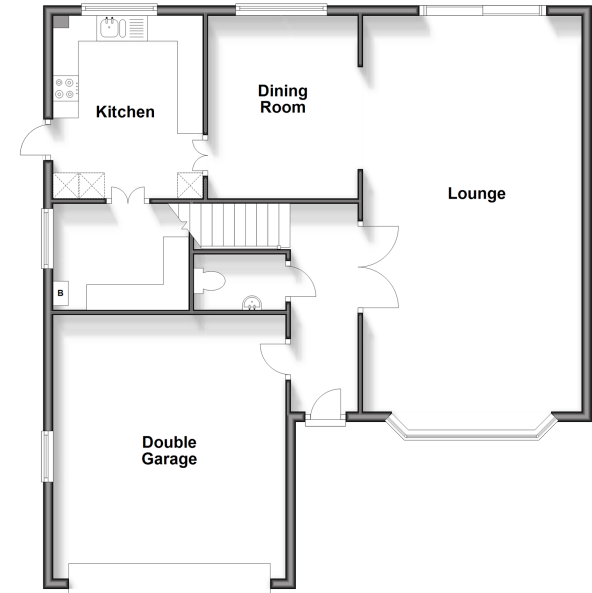
FIRST FLOOR

- Landing
- Bedroom 1: 14'0 x 13'4 (4.27m x 4.07m)
- Ensuite Shower Room : 10'1 x 7'3 (3.08m x 2.21m)
- Bedroom 2: 14'0 x 11'11 (4.27m x 3.63m)
- Bedroom 3: 12'6 x 10'1 (3.81m x 3.08m)
- Bedroom 4: 10'1 x 8'9 (3.08m x 2.67m)
- Bathroom: 8'8 x 7'6 (2.64m x 2.29m)

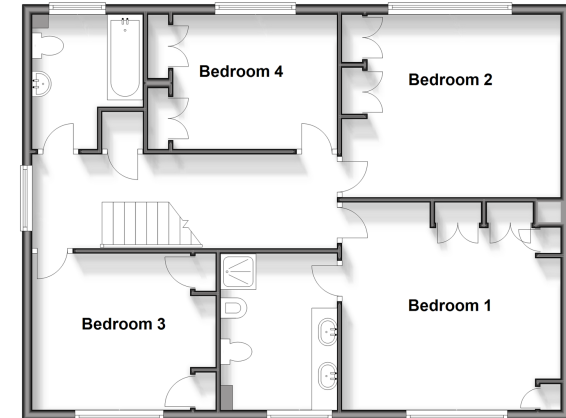
OUTSIDE

- Double Garage: 16'10 x 14'8 (5.13m x 4.47m)
- Front Garden
- Rear Garden

Ground Floor
Approx. 96.6 sq. metres (1039.8 sq. feet)



First Floor
Approx. 81.3 sq. metres (874.6 sq. feet)



Call Meopham - 01474 813100 ■ wardsof Kent.co.uk

- Legal advice should be taken to verify fixtures/fittings, planning, alterations and/or lease details
- Appliances & services are untested, dimensions are approximate and floor plans are not to scale
- Through a Homewise Home For Life Plan people aged 60+ can secure this property for up to 59% less, by purchasing a Lifetime Lease.



13321136/20241023/HF/HF