



Price

£635,000

Freehold

4x  2x  1x 

**Beechwood Drive,
Culverstone, Kent, DA13**

OVER 60?

Secure this property
for up to **59% less!**

Wards
Helping you move forwards

Accommodation

GROUND FLOOR

Entrance Hall: 9'6 x 6'3 (2.90m x 1.91m)

Cloakroom: 6'3 x 3'5 (1.91m x 1.04m)

Lounge: 19'7 x 18'3 (5.97m x 5.57m)

LOWER GROUND FLOOR

Landing

Kitchen: 12'11 x 11'2 (3.94m x 3.41m)

Utility Room: 6'3 x 5'6 (1.91m x 1.68m)

Conservatory: 9'7 x 6'6 (2.92m x 1.98m)

Bedroom 4: 11'2 x 9'5 (3.41m x 2.87m)

UPPER GROUND FLOOR

Landing

Bedroom 2: 10'10 x 9'6 (3.30m x 2.90m)

Bedroom 3: 11'2 x 9'7 (3.41m x 2.92m)

Shower Room: 6'0 x 5'5 (1.83m x 1.65m)

FIRST FLOOR

Landing

Bedroom 1: (L-shaped) 12'4 x 10'2 (3.76m x 3.10m) plus 8'1 x 5'10 (2.47m x 1.78m)

Bathroom: 6'8 x 5'8 (2.03m x 1.73m)

Loft Room: 11'6 x 8'4 (3.51m x 2.54m)

OUTBUILDING

Double Garage

OUTSIDE

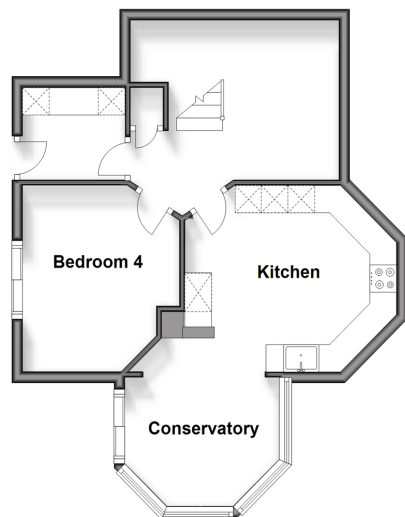
Driveway

Front Garden

Rear Garden

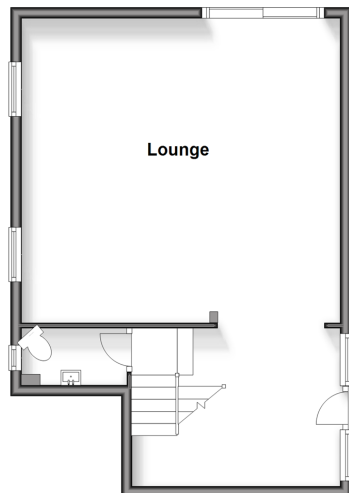
Lower Ground Floor

Approx. 44.8 sq. metres (481.7 sq. feet)



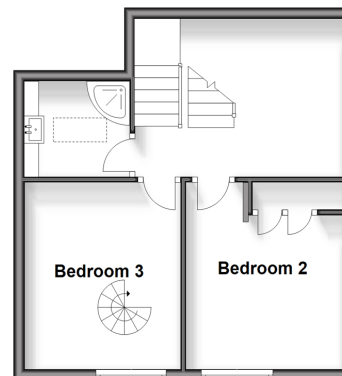
Ground Floor

Approx. 47.5 sq. metres (511.7 sq. feet)



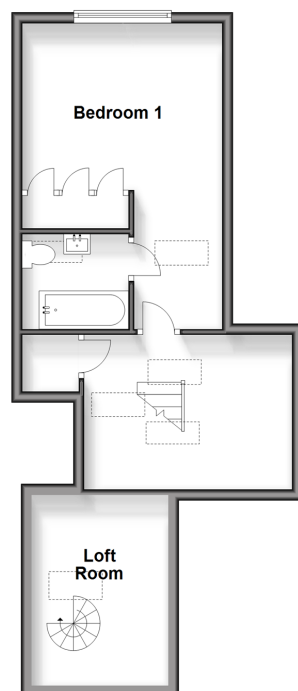
Upper Ground Floor

Approx. 35.9 sq. metres (386.3 sq. feet)



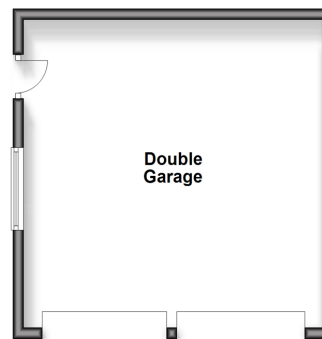
First Floor

Approx. 42.9 sq. metres (461.8 sq. feet)



Outbuilding

Approx. 31.6 sq. metres (340.6 sq. feet)





Main features

- Close to local amenities
- Spacious layout with plenty of entertaining space
- Impressive condition throughout with high quality finishes
- Granted planning permission on detached garage for gym/games room and shower room
- Being offered with no onward chain



Nearest Schools

Primary and Secondary: Vigo Village School 0.3 miles, Culverstone Green Primary 0.6 miles, Trottiscliffe C of E Primary 1.3 miles, Meopham School 2.2 miles, Helen Allison School 2.7 miles, Grange Park School 3.2 miles



Transport Information

Train Stations: Sole Street 3.3 miles, Meopham 3.4 miles, Borough Green & Wrotham 3.7 miles



Address

Beechwood Drive, Culverstone, Kent, DA13



Directions

For directions to this property please contact us.



Call Meopham Branch 01474 813100 ■ wardsofkent.co.uk



- Legal advice should be taken to verify fixtures/fittings, planning, alterations and/or lease details
- Appliances & services are untested, dimensions are approximate and floor plans are not to scale
- Through a Homewise Home For Life Plan people aged 60+ can secure this property for up to 59% less, by purchasing a Lifetime Lease.



13326024/20250519/HF/HF