



**Price**

**£600,000**

**Freehold**

3x  2x  1x 

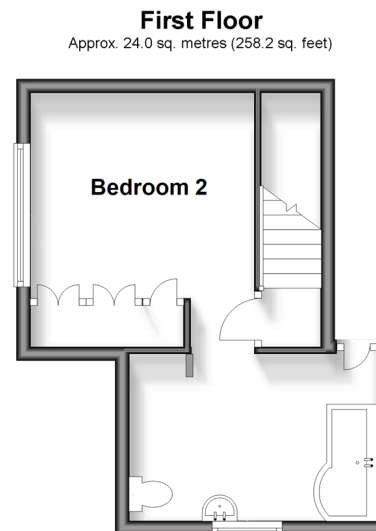
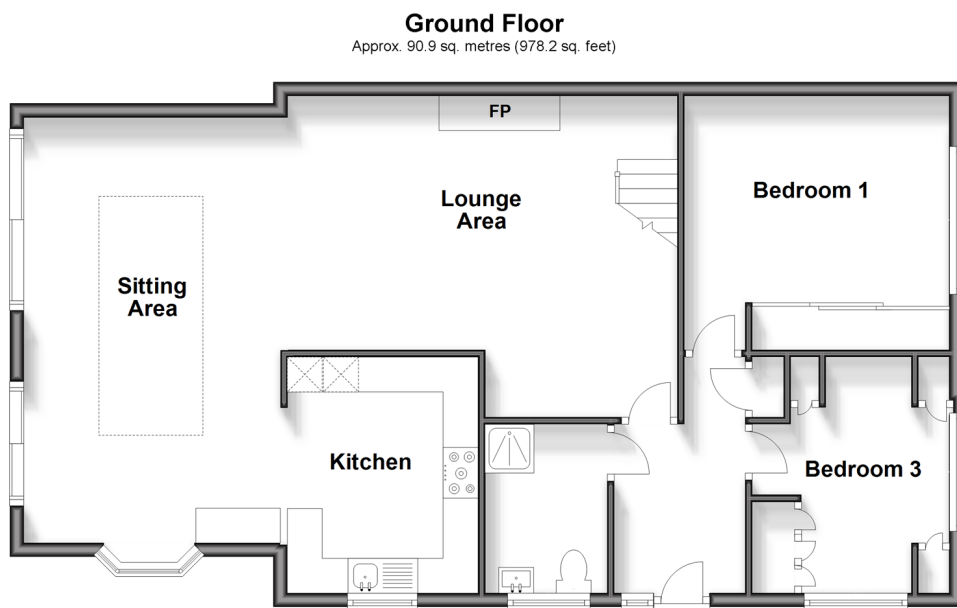
**Willow Walk,  
Culverstone, Kent, DA13**

**OVER 60?**

Secure this property  
for up to **59% less!**

*Wards*  
Helping you move forwards





**Outbuilding**  
Approx. 35.0 sq. metres (376.3 sq. feet)



## Accommodation

### GROUND FLOOR

Hallway  
Lounge Area: 18'4 x 15'2 (5.59m x 4.63m)  
Sitting Area: 20'1 x 11'11 (6.13m x 3.63m)  
Kitchen : 11'1 x 8'11 (3.38m x 2.72m)  
Bedroom 1: 12'5 x 12'1 (3.79m x 3.69m)  
Bedroom 3: 11'1 x 9'4 (3.38m x 2.85m)  
Shower Room: 8'0 x 5'9 (2.44m x 1.75m)

### FIRST FLOOR

Landing  
Bedroom 2: 12'3 x 10'7 (3.74m x 3.23m)  
Bathroom: 11'8 x 7'10 (3.56m x 2.39m)

### OUTBUILDING

Garden Room: 13'11 x 9'10 (4.24m x 3.00m)  
Garage: 23'1 x 10'6 (7.04m x 3.20m)

### OUTSIDE

Driveway  
Front Garden  
Rear Garden



## Main features

- Ideal for those downsizing with 2 bedrooms to ground floor
- Walking distance to local shops and amenities at Culverstone
- Impressive loft conversion providing additional bedroom and bathroom
- Substantial rear garden with summer house and garage
- Catchment to local schools



### Nearest Schools

Primary and Secondary Schools: Culverstone Green Primary 0.2 miles, Vigo Village School 0.9 miles, Trottiscliffe C of E Primary 1.7 miles, Meopham School 1.8 miles, Helen Allison School 2.3 miles, Wrotham School 3.4 miles



### Transport Information

Train Stations: Sole Street 3.0 miles, Meopham 3.0 miles, Borough Green & Wrotham 3.9 miles



### Address

Willow Walk, Culverstone, Kent, DA13



### Directions

For directions to this property please contact us.





Call Meopham Branch 01474 813100 ■ [wardsofkent.co.uk](http://wardsofkent.co.uk)



- Legal advice should be taken to verify fixtures/fittings, planning, alterations and/or lease details
- Appliances & services are untested, dimensions are approximate and floor plans are not to scale
- Through a Homewise Home For Life Plan people aged 60+ can secure this property for up to 59% less, by purchasing a Lifetime Lease.



13321209/20250204/SB/HF