



**Price**  
**£420,000**

**Freehold**

4x  1x  2x 

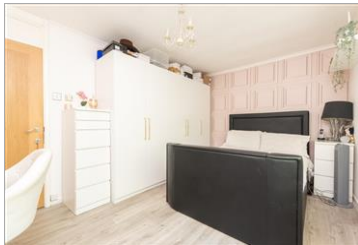
**Churchside, Vigo, Kent,  
DA13**

**OVER 60?**

Secure this property  
for up to **59% less!**

*Wards*  
Helping you move forwards





## Main features

- Off road parking for 3 vehicles directly to the rear
- Short walk to Trosley Country Park
- Low maintenance garden with rear access
- Planning permission granted for double storey extension
- Stylishly refurbished throughout to an excellent condition

## Accommodation

### GROUND FLOOR

Hallway

Cloakroom

Lounge Area: 15'3 x 10'11 (4.65m x 3.33m)

Kitchen: 15'8 x 9'11 (4.78m x 3.02m)

Family Area: 9'4 x 8'4 (2.85m x 2.54m)

Dining Area: 13'5 x 9'11 (4.09m x 3.02m)

Bedroom 3: 16'2 x 7'6 (4.93m x 2.29m)

### FIRST FLOOR

Landing

Bedroom 1: 13'4 x 10'2 (4.07m x 3.10m)

Bedroom 2: 9'11 x 9'11 (3.02m x 3.02m)

Bedroom 4: 9'0 x 7'11 (2.75m x 2.41m)

Bathroom: 6'5 x 5'8 (1.96m x 1.73m)

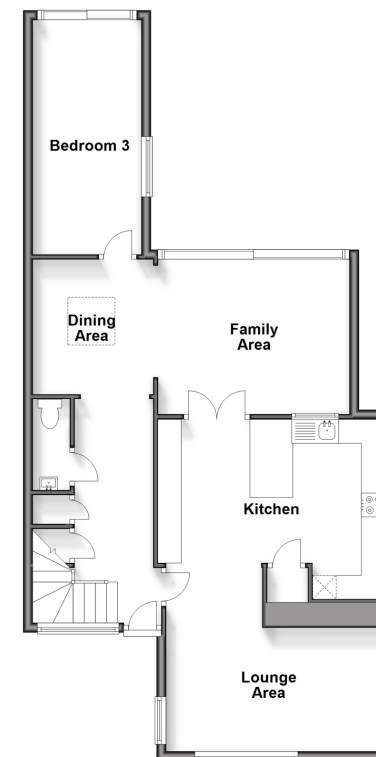
### OUTSIDE

Driveway

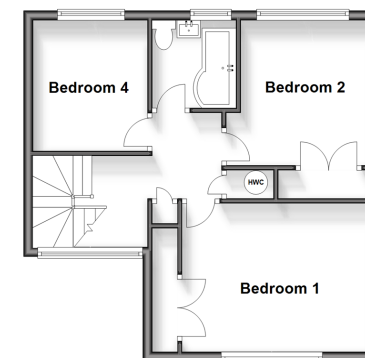
Front Garden

Rear Garden

Ground Floor  
Approx. 78.9 sq. metres (849.1 sq. feet)



First Floor  
Approx. 44.4 sq. metres (477.8 sq. feet)



**Call Meopham - 01474 813100 ■ [wardsof Kent.co.uk](http://wardsof Kent.co.uk)**

- Legal advice should be taken to verify fixtures/fittings, planning, alterations and/or lease details
- Appliances & services are untested, dimensions are approximate and floor plans are not to scale
- Through a Homewise Home For Life Plan people aged 60+ can secure this property for up to 59% less, by purchasing a Lifetime Lease.



13324692/20241130/SB/KD