



**OVER 60?**

Secure this property  
for up to **59% less!**

**Price**

**£725,000**

**Freehold**

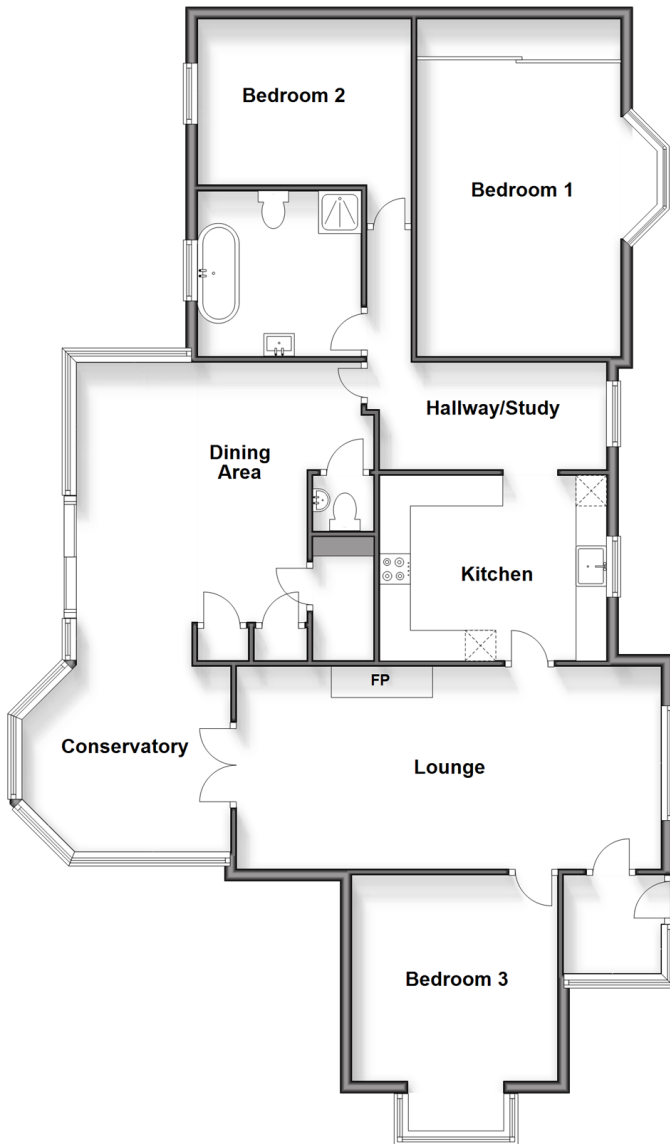
3x  1x  1x 

**South Street, Meopham,  
Kent, DA13**

*Wards*  
Helping you move forwards

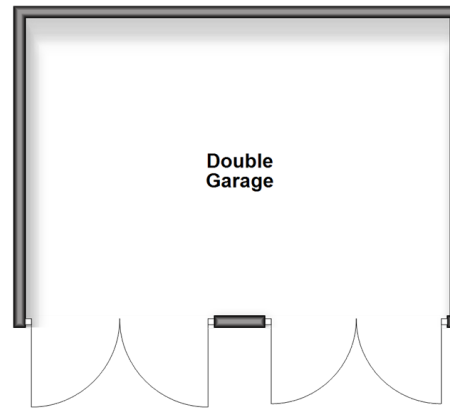
### Ground Floor

Approx. 131.0 sq. metres (1410.4 sq. feet)



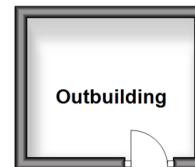
### Outbuilding

Approx. 34.0 sq. metres (365.7 sq. feet)



### Outbuilding

Approx. 6.3 sq. metres (67.8 sq. feet)



## Accommodation

### GROUND FLOOR

Porch: 5'9 x 5'2 (1.75m x 1.58m)

Lounge: 22'10 x 10'11 (6.96m x 3.33m)

Kitchen: 12'6 x 9'10 (3.81m x 3.00m)

Hallway/Study: 12'2 x 5'10 (3.71m x 1.78m)

Dining Area: 15'8 x 5'10 (4.78m x 1.78m)

Cloakroom: 3'9 x 3'3 (1.14m x 0.99m)

Conservatory: 12'3 x 10'6 (3.74m x 3.20m)

Bedroom 1: 16'1 x 11'2 (4.91m x 3.41m) plus  
6'10 x 3'5 (2.08m x 1.04m)

Bedroom 2: 11'0 x 11'0 (3.36m x 3.36m) plus  
5'0 x 2'7 (1.53m x 0.79m)

Bedroom 3: 11'10 x 8'9 (3.61m x 2.67m)  
plus 2'0 x 2'0 (0.61m x 0.61m)

Bathroom: 8'10 x 8'8 (2.69m x 2.64m)

### OUTBUILDING

Double Garage: 16'3 x 3'3 (4.96m x 0.99m)

Outbuilding

### OUTSIDE

Gated Driveway

Front Garden

Rear Garden





## Main features

- High quality finishes throughout
- Private gated driveway including electric car charging point
- Semi-rural location with scenic countryside walks nearby
- Catchment area for local primary and secondary schools
- Spacious rooms throughout with plenty of living space to enjoy

### Nearest Schools

Primary Schools: Culverstone Green Primary 1.0 miles, Meopham Community Primary 1.3 miles, Vigo Village School 1.8 miles  
Meopham School 0.9 miles, Helen Allison School 1.3 miles, Longfield Academy 3.3 miles

### Transport Information

Train Stations: Meopham 2.0 miles, Sole Street 2.1 miles, Longfield 3.4 miles

### Address

South Street, Meopham, Kent, DA13

### Directions

For directions to this property please contact us.





*Wards*  
Helping you move forwards

Call Meopham Branch 01474 813100 ■ [wardsofkent.co.uk](http://wardsofkent.co.uk)



■ If buying to let, the energy rating will need to be improved to at least 'E' rating before you can let the property  
■ Appliances & services are untested, dimensions are approximate and floor plans are not to scale

■ Legal advice should be taken to verify fixtures/fittings, planning, alterations and/or lease details  
■ Through a Homewise Home For Life Plan people aged 60+ can secure this property for up to 59% less, by purchasing a Lifetime Lease.

13323739/20240805/HF/HF