



Guide Price
£600,000

Freehold

5x  3x  2x 

**Whitepost Lane,
Culverstone, Meopham,
Kent, DA13**

OVER 60?

Secure this property
for up to **59% less!**

Wards
Helping you move forwards



Main features

- Relaxing sunroom overlooking rear garden with heating
- Tandem double length garage with electric door
- Mature garden with well-presented borders and outside lighting
- Generous living accommodation with bedrooms to both floors
- Ample storage space throughout

Accommodation

GROUND FLOOR

Hallway

Lounge: 15'9 x 13'8 (4.80m x 4.17m)

Kitchen: 12'5 x 11'9 (3.79m x 3.58m)

Dining Room: 15'3 x 10'6 (4.65m x 3.20m)

Garden Room: 15'1 x 8'10 (4.60m x 2.69m)

Bedroom 2: 13'10 x 10'4 (4.22m x 3.15m)

Bedroom 5/Study: 10'6 x 8'5 (3.20m x 2.57m)

Shower Room: (L-shaped) 7'6 x 6'5 (2.29m x 1.96m) plus 3'10 x 3'0 (1.17m x 0.92m)

FIRST FLOOR

Landing

Bedroom 1: (L-shaped) 15'7 x 9'5 (4.75m x 2.87m) plus 4'9 x 4'4 (1.45m x 1.32m)

Ensuite Bathroom: 10'3 x 7'5 (3.13m x 2.26m)

Walk in Wardrobe

Bedroom 3: 10'7 x 10'5 (3.23m x 3.18m)

Bedroom 4: 10'5 x 8'9 (3.18m x 2.67m)

Bathroom: 8'6 x 6'9 (2.59m x 2.06m)

Utility Room: 15'4 x 5'7 (4.68m x 1.70m)

OUTSIDE

Garage: (L-shaped) 34'8 x 7'10 (10.57m x 2.39m) plus 15'2 x 1'11 (4.63m x 0.58m)

Driveway

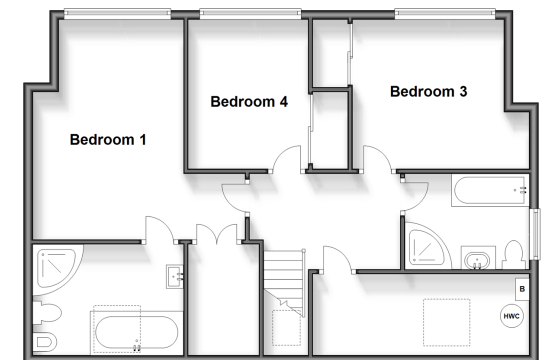
Front Garden

Rear Garden

Ground Floor
Approx. 138.1 sq. metres (1486.8 sq. feet)



First Floor
Approx. 75.1 sq. metres (808.1 sq. feet)



Call Meopham - 01474 813100 ■ wardsof Kent.co.uk

- Legal advice should be taken to verify fixtures/fittings, planning, alterations and/or lease details
- Appliances & services are untested, dimensions are approximate and floor plans are not to scale
- Through a Homewise Home For Life Plan people aged 60+ can secure this property for up to 59% less, by purchasing a Lifetime Lease.



13318346/20240518/SB/DF