



Price
£675,000

Freehold

5x  2x  3x 

**Meadow Lane,
Culverstone, Kent, DA13**

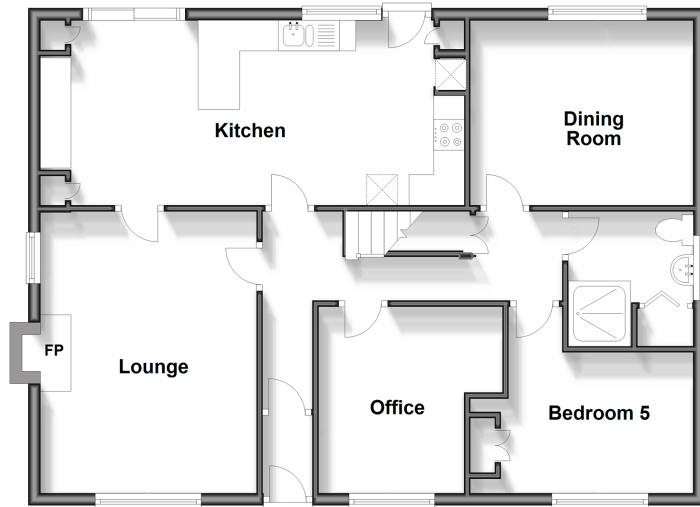
OVER 60?

Secure this property
for up to **59% less!**

Wards
Helping you move forwards

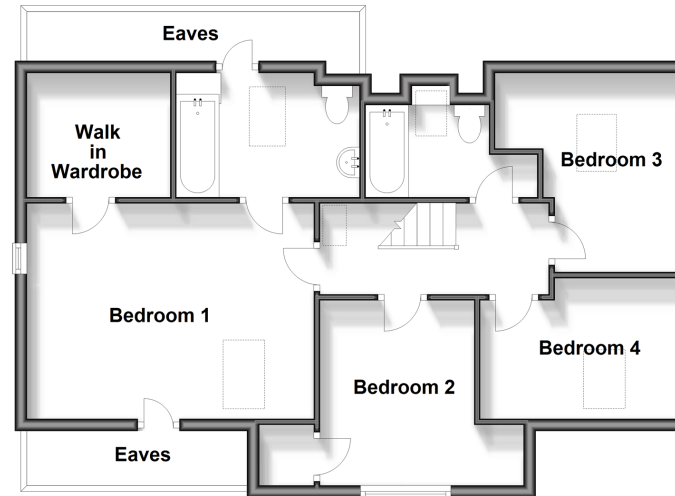
Ground Floor

Approx. 82.7 sq. metres (889.7 sq. feet)



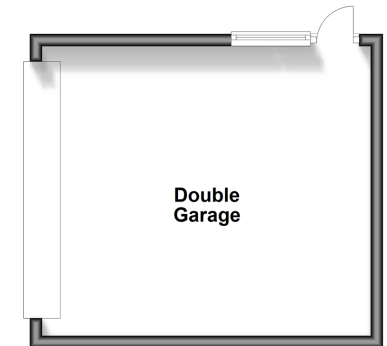
First Floor

Approx. 63.9 sq. metres (687.8 sq. feet)



Outbuilding

Approx. 25.5 sq. metres (274.1 sq. feet)



Accommodation

GROUND FLOOR

Hallway

Lounge: 14'11 x 11'7 (4.55m x 3.53m)

Office: (L-shaped) 9'6 x 7'5 (2.90m x 2.26m) plus 4'5 x 2'5 (1.35m x 0.74m)

Dining Room: 11'11 x 9'11 (3.63m x 3.02m)

Kitchen: 22'9 x 9'10 (6.94m x 3.00m)

Bedroom 5: (L-shaped) 9'7 x 7'2 (2.92m x 2.19m) plus 4'7 x 2'6 (1.40m x 0.76m)

Shower Room: 7'3 x 6'6 (2.21m x 1.98m)

FIRST FLOOR

Landing

Bedroom 1: 15'1 x 11'4 (4.60m x 3.46m)

Ensuite Bathroom: 9'7 x 6'2 (2.92m x 1.88m)

Walk-in-Wardrobe: 7'8 x 6'4 (2.34m x 1.93m)

Bedroom 2: 10'4 x 9'9 (3.15m x 2.97m)

Bedroom 3: (L-shaped) 10'3 x 6'6 (3.13m x 1.98m) plus 3'10 x 3'0 (1.17m x 0.92m)

Bedroom 4: (L-shaped) 7'3 x 6'5 (2.21m x 1.96m) plus 6'0 x 4'9 (1.83m x 1.45m)

Bathroom: (L-shaped) 6'10 x 4'11 (2.08m x 1.50m) plus 2'4 x 2'1 (0.71m x 0.64m)

OUTBUILDINGS

Double Garage: 16'7 x 15'6 (5.06m x 4.73m)

Outbuilding: 19'6 x 9'10 (5.95m x 3.00m)

OUTSIDE

Driveway

Front Garden

Rear Garden



Main features

- Open plan kitchen, ideal for entertaining guests
- Spacious driveway with large double garage
- Expansive rear garden with large outbuilding on the upper tier
- Incredible potential to improve internally
- Downstairs office, perfect for remote working



Nearest Schools

Primary Schools: Vigo Village School 0.4 miles, Culverstone Green Primary 0.4 miles, Trottiscliffe C of E Primary 1.2 miles
Secondary Schools: Meopham School 2.2 miles, Helen Allison School 2.7 miles, Wrotham School 3.1 miles,



Transport Information

Train Stations: Sole Street 3.4 miles, Meopham 3.4 miles, Borough Green & Wrotham 3.6 miles



Address

Meadow Lane, Culverstone, Kent, DA13



Directions

For directions to this property please contact us.



Wards
Helping you move forwards

Call Meopham Branch 01474 813100 ■ wardsofkent.co.uk



- Legal advice should be taken to verify fixtures/fittings, planning, alterations and/or lease details
- Appliances & services are untested, dimensions are approximate and floor plans are not to scale
- Through a Homewise Home For Life Plan people aged 60+ can secure this property for up to 59% less, by purchasing a Lifetime Lease.

EPC RATING

CURRENT:	POTENTIAL:
D(68)	B(82)

13324893/20240615/SB/DF