



**Guide Price**  
**£210,000**

**Leasehold**

2x  1x  1x 

**Hastings Road,  
Maidstone, Kent ME15**

**OVER 60?**

Secure this property  
for up to **59% less!**

*Wards*  
Helping you move forwards





## Main features

- Ground floor apartment
- Completely refurbished to a high standard including new carpets
- No service charge & only £100 per year ground rent
- Spacious throughout with room to entertain
- Walking distance to local schools, shops and the town centre

## Accommodation

### SPLIT-LEVEL GROUND FLOOR

#### Entrance Hall

Lounge: 15'4 x 12'9 (4.68m x 3.89m)

Dining Area: 14'2 x 10'5 (4.32m x 3.18m)

Bedroom 2: 13'5 x 10'7 (4.09m x 3.23m)

Kitchen: 10'2 x 8'0 (3.10m x 2.44m)

Shower Room: 8'5 x 6'4 (2.57m x 1.93m)

### BASEMENT

Bedroom 1: 15'9 x 11'7 (4.80m x 3.53m)

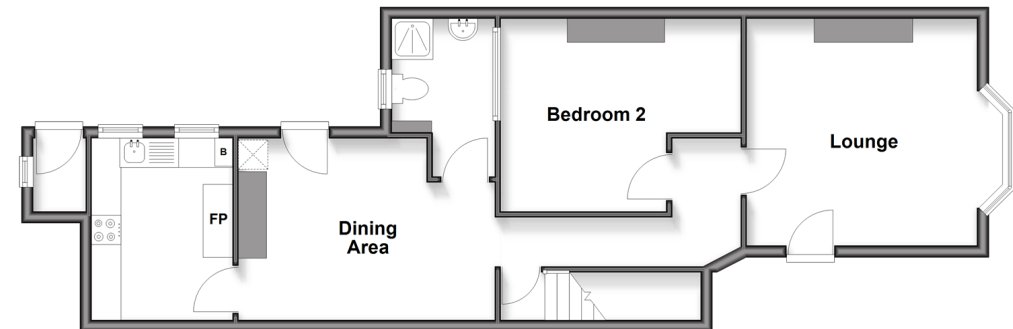
### OUTSIDE

Rear Garden

Front Garden

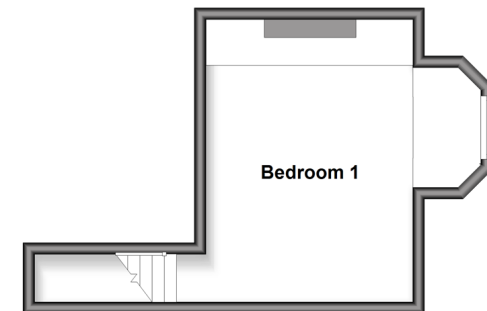
### Split Level Ground Floor

Approx. 62.9 sq. metres (677.2 sq. feet)



### Basement

Approx. 21.6 sq. metres (232.5 sq. feet)



**Call Maidstone - 01622 683737 ■ [wardsofkent.co.uk](http://wardsofkent.co.uk)**

■ Legal advice should be taken to verify fixtures/fittings, planning, alterations and/or lease details  
 ■ Through a Homewise Home For Life Plan people aged 60+ can secure this property for up to 50% less, by purchasing a Lifetime Lease.

■ Appliances & services are untested, dimensions are approximate and floor plans are not to scale



13155293/20251122/CV/TB