



Guide Price
£325,000

Freehold

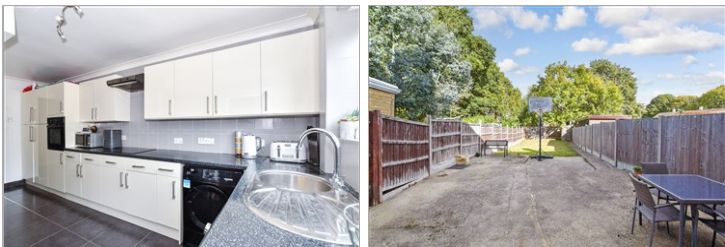
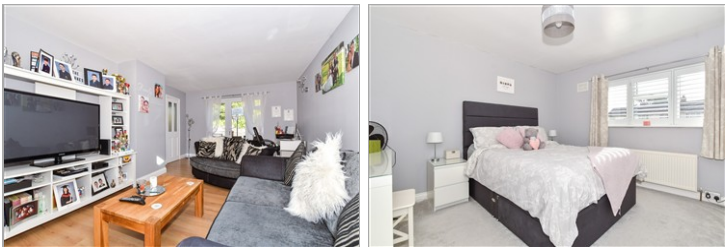
3x  1x  1x 

**Lancashire Road,
Maidstone, Kent ME15**

OVER 60?

Secure this property
for up to **59% less!**

Wards
Helping you move forwards



Main features

- Immaculately presented with modern decor throughout
- Large driveway for multiple cars
- Heavily extended with more space to entertain
- Stunning garden, perfect for a growing family
- walking distance to local schools, shops and amenities

Accommodation

GROUND FLOOR

Hallway

Dining Area: 14'6 x 9'7 (4.42m x 2.92m)

Lounge: 17'9 x 11'5 (5.41m x 3.48m)

Kitchen: 17'9 x 8'9 (5.41m x 2.67m)

FIRST FLOOR

Landing

Bedroom 1: 11'7 x 11'7 (3.53m x 3.53m)

Bedroom 2: 11'7 x 6'6 (3.53m x 1.98m)

Bedroom 3: 11'7 x 5'6 (3.53m x 1.68m)

Bathroom

OUTSIDE

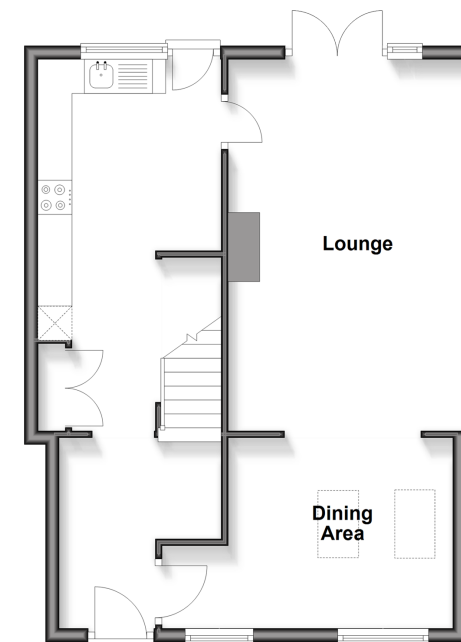
Rear Garden

Front Garden

Driveway

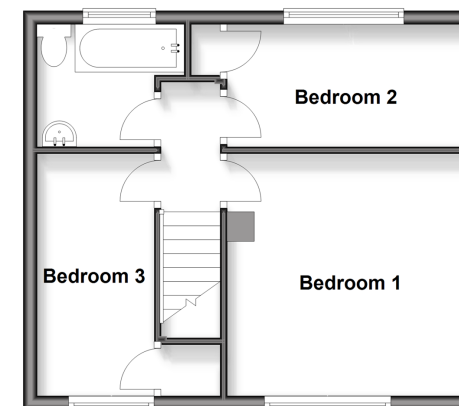
Ground Floor

Approx. 50.8 sq. metres (547.2 sq. feet)



First Floor

Approx. 34.4 sq. metres (370.8 sq. feet)



Call Maidstone - 01622 683737 ■ wardsofkent.co.uk

- Legal advice should be taken to verify fixtures/fittings, planning, alterations and/or lease details
- Appliances & services are untested, dimensions are approximate and floor plans are not to scale
- Through a Homewise Home For Life Plan people aged 60+ can secure this property for up to 50% less, by purchasing a Lifetime Lease.



13159124/20251009/TB/TB