



Price
£700,000

Freehold

4x  2x  3x 

**Roseleigh Avenue,
Allington, Maidstone,
Kent ME16**

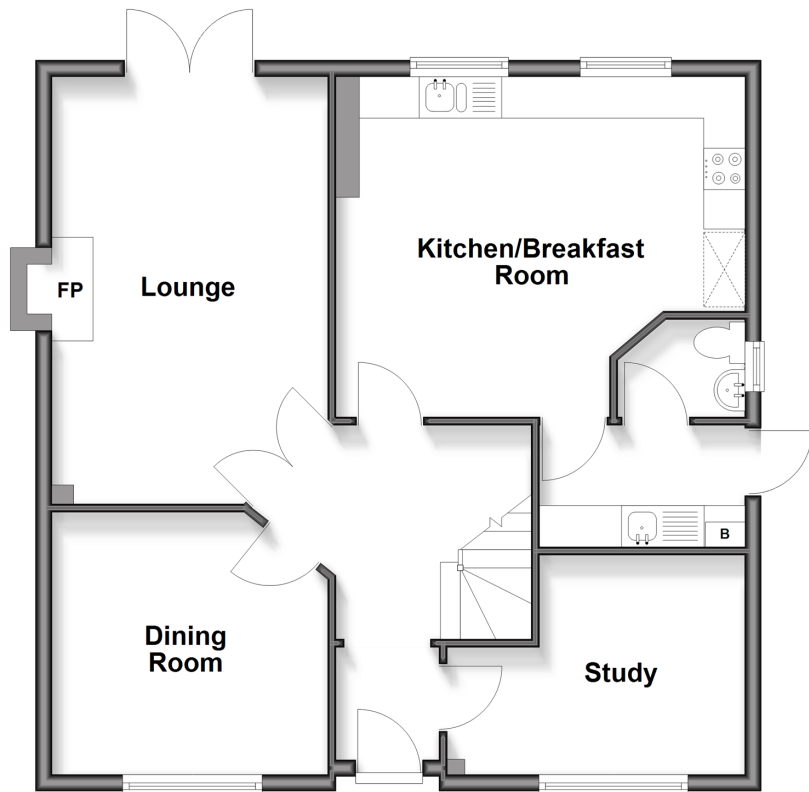
OVER 60?

Secure this property
for up to **59% less!**

Wards
Helping you move forwards

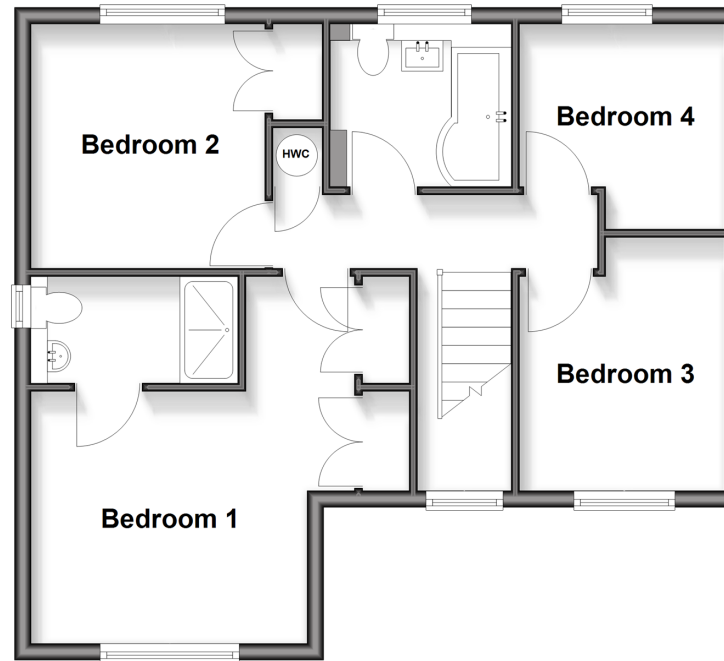
Ground Floor

Approx. 70.5 sq. metres (758.6 sq. feet)



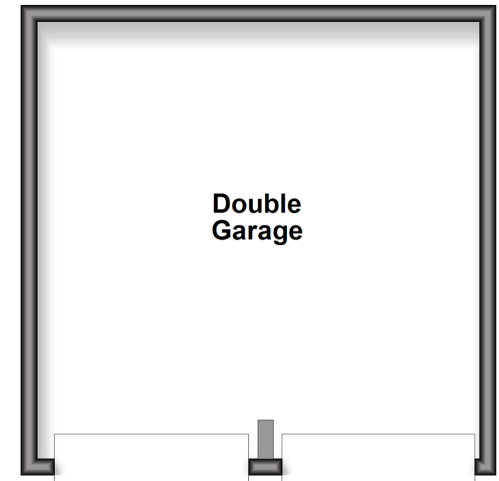
First Floor

Approx. 53.5 sq. metres (575.6 sq. feet)



Outbuilding

Approx. 28.3 sq. metres (304.3 sq. feet)



Accommodation

GROUND FLOOR

Hallway

Study: 11'7 x 8'8 (3.53m x 2.64m)

Dining Room: 10'9 x 10'4 (3.28m x 3.15m)

Lounge: 16'9 x 10'9 (5.11m x 3.28m)

Kitchen/Breakfast Room: 16'2 (4.93m) x 12'9 (3.89m) narrowing to 11'2 (3.41m)

Utility/Cloakroom

FIRST FLOOR

Landing

Bedroom 1: 14'4 x 12'8 (4.37m x 3.86m) narrowing to 10'3 x 10'9 (3.13m x 3.28m)

En Suite Shower Room

Bedroom 2: 9'8 x 9'6 (2.95m x 2.90m)

Bedroom 3: 9'10 x 8'3 (3.00m x 2.52m)

Bedroom 4: 8'4 (2.54m) narrowing to 6'7 (2.01m) x 8'3 (2.52m)

Bathroom

OUTBUILDING

Double Garage

OUTSIDE

Rear Garden

Front Garden

Driveway



Main features

- Bellwinch Homes built house in cul-de-sac location
- Electric gated entrance, double detached garage and driveway
- En-suite facilities to bedroom 1
- Spacious summer house for entertaining
- Located within the ever popular suburb of Allington



Nearest Schools

Primary Schools: St Francis' Catholic Primary, Maidstone, Palace Wood Primary, Allington Primary School.
Secondary Schools: St Simon Stock Catholic School, St Augustine Academy, Oakwood Park Grammar all in walking distance.



Transport Information

Train Stations: Maidstone Barracks 0.8 miles, Barming 0.8 miles, Maidstone West 0.9 miles



Address

Roseleigh Avenue, Allington, Maidstone, Kent ME16



Directions

For directions to this property please contact us.



Wards
Helping you move forwards

Call Maidstone Branch 01622 683737 ■ wardsofkent.co.uk



- The seller is a person connected with Wards as defined in the Estate Agents Act 1979
- Appliances & services are untested, dimensions are approximate and floor plans are not to scale

- Legal advice should be taken to verify fixtures/fittings, planning, alterations and/or lease details
- Through a Homewise Home For Life Plan people aged 60+ can secure this property for up to 50% less, by purchasing a Lifetime Lease.



13159116/20250924/DS/TB