



Guide Price
£450,000

Freehold

3x  2x  1x 

**The Weavers,
Maidstone, Kent ME16**

OVER 60?

Secure this property
for up to **59% less!**

Wards
Helping you move forwards



Main features

- Beautifully presented mock Tudor house
- Stylish modern kitchen with island
- Suntrap garden, garage with electric door
- Sought after position in a popular area with the potential to extend over the garage, subject to planning permission
- Popular location with secondary and primary schools close by and short drive to the M20

Accommodation

GROUND FLOOR

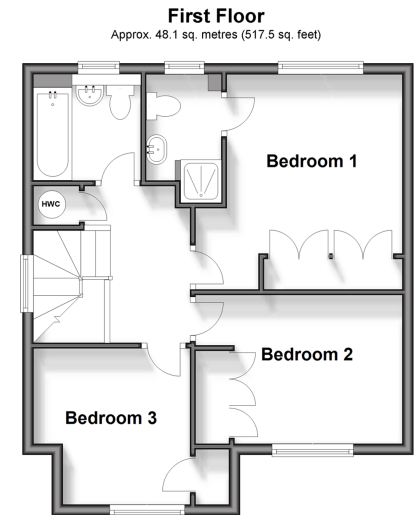
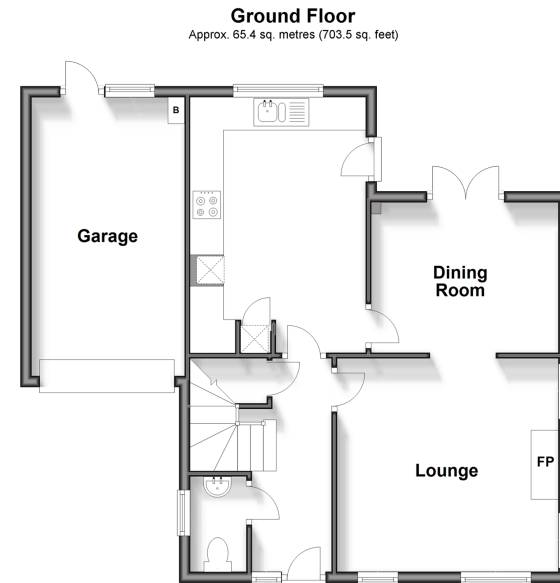
Hallway
Cloakroom
Lounge: 13'2 x 12'7 (4.02m x 3.84m)
Dining Room: 11'2 x 9'1 (3.41m x 2.77m)
Kitchen/Breakfast Room: 14'10 x 11'1 (4.52m x 3.38m)

FIRST FLOOR

Landing
Bedroom 1: 13'1 x 12'3 (3.99m x 3.74m)
En-Suite Shower Room: 6'7 x 4'6 (2.01m x 1.37m)
Bedroom 2: 12'3 x 9'2 (3.74m x 2.80m)
Bedroom 3: 9'7 x 9'2 (2.92m x 2.80m)
Bathroom: 6'5 x 5'4 (1.96m x 1.63m)

OUTSIDE

Rear Garden
Front Garden
Driveway
Garage: 17'5 x 9'4 (5.31m x 2.85m)



Call Maidstone - 01622 683737 ■ wardsofkent.co.uk

■ Legal advice should be taken to verify fixtures/fittings, planning, alterations and/or lease details
■ Through a Homewise Home For Life Plan people aged 60+ can secure this property for up to 50% less, by purchasing a Lifetime Lease.

■ Appliances & services are untested, dimensions are approximate and floor plans are not to scale



13158535/20251014/CMC/DS