



**Guide Price**  
**£240,000**

**Freehold**

2x  1x  2x 

**Thornhill Place,  
Maidstone, Kent ME14**

**OVER 60?**

Secure this property  
for up to **59% less!**

*Wards*  
Helping you move forwards





## Main features

- Character style Victorian cottage
- Beautifully presented with modern decor throughout
- Attractive sunny rear garden
- A short walk to Maidstone East train station
- Fantastic location, nearby to great motorway and transport links

## Accommodation

### SPLIT-LEVEL GROUND FLOOR

Entrance Porch

Lounge: 12'1 x 10'3 (3.69m x 3.13m)

Dining Room: 10'2 x 10'0 (3.10m x 3.05m)

Kitchen: 9'5 x 6'1 (2.87m x 1.86m)

### FIRST FLOOR

Landing

Bedroom 1: 10'5 x 10'1 (3.18m x 3.08m)

Bedroom 2: 10'4 x 9'7 (3.15m x 2.92m)

Bathroom

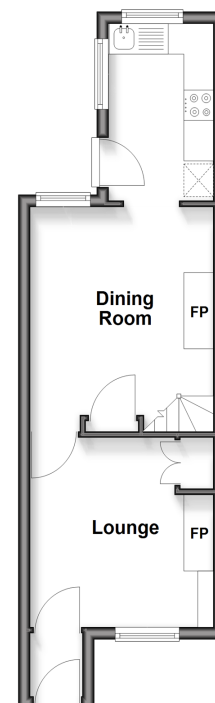
### OUTSIDE

Rear Garden

Small Frontage

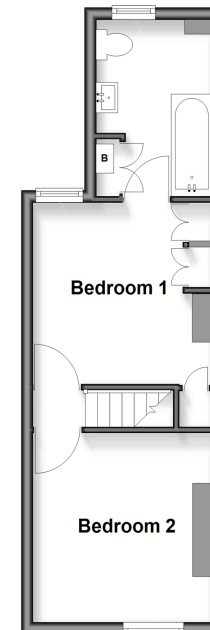
### Split Level Ground Floor

Approx. 27.9 sq. metres (300.2 sq. feet)



### First Floor

Approx. 27.0 sq. metres (290.9 sq. feet)



**Call Maidstone - 01622 683737 ■ [wardsofkent.co.uk](http://wardsofkent.co.uk)**

■ Legal advice should be taken to verify fixtures/fittings, planning, alterations and/or lease details  
 ■ Through a Homewise Home For Life Plan people aged 60+ can secure this property for up to 50% less, by purchasing a Lifetime Lease.

■ Appliances & services are untested, dimensions are approximate and floor plans are not to scale



13158956/20250924/CA/TB