



**Guide Price**  
**£250,000**

**Freehold**

2x  1x  1x 

**The Quern, Maidstone,  
Kent ME15**

**OVER 60?**

Secure this property  
for up to **59% less!**

*Wards*  
Helping you move forwards





## Main features

- Beautifully decorated with neutral decor throughout
- Garage en-bloc and parking to front
- Perfect for first time buyers or investors
- Quiet location, walking distance to local schools and amenities
- Spacious throughout with room to entertain family and friends

## Accommodation

### GROUND FLOOR

Entrance Porch

Lounge: 14'6 x 11'3 (4.42m x 3.43m)

Kitchen: 11'1 x 8'5 (3.38m x 2.57m)

### FIRST FLOOR

Landing

Bedroom 1: 11'9 x 8'8 (3.58m x 2.64m)

Bedroom 2: 8'4 x 6'1 (2.54m x 1.86m)

Bathroom

### OUTBUILDING

Garage

### OUTSIDE

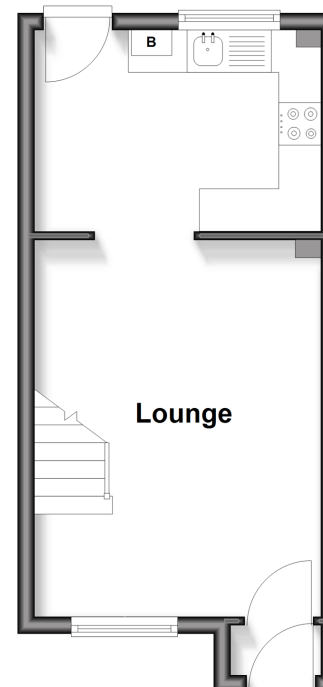
Rear Garden

Small Frontage

2 Allocated Parking Spaces

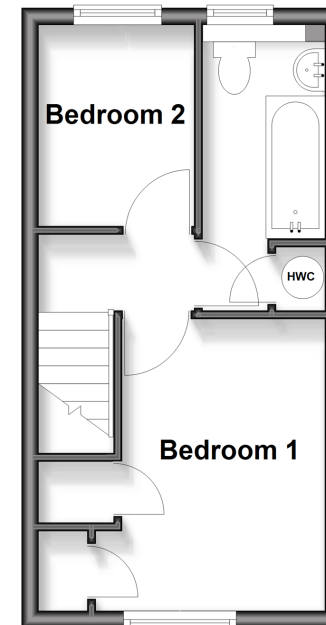
### Ground Floor

Approx. 260.8 sq. feet



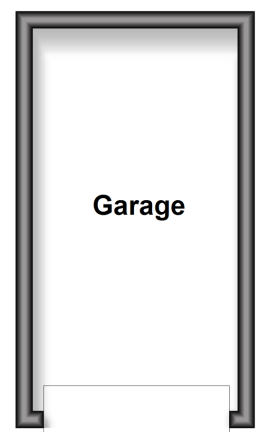
### First Floor

Approx. 253.8 sq. feet



### Outbuilding

Approx. 118.5 sq. feet



**Call Maidstone - 01622 683737 ■ [wardsofkent.co.uk](http://wardsofkent.co.uk)**

■ Legal advice should be taken to verify fixtures/fittings, planning, alterations and/or lease details  
 ■ Through a Homewise Home For Life Plan people aged 60+ can secure this property for up to 50% less, by purchasing a Lifetime Lease.

■ Appliances & services are untested, dimensions are approximate and floor plans are not to scale