



**Guide Price**  
**£325,000**

**Freehold**

3x  1x  1x 

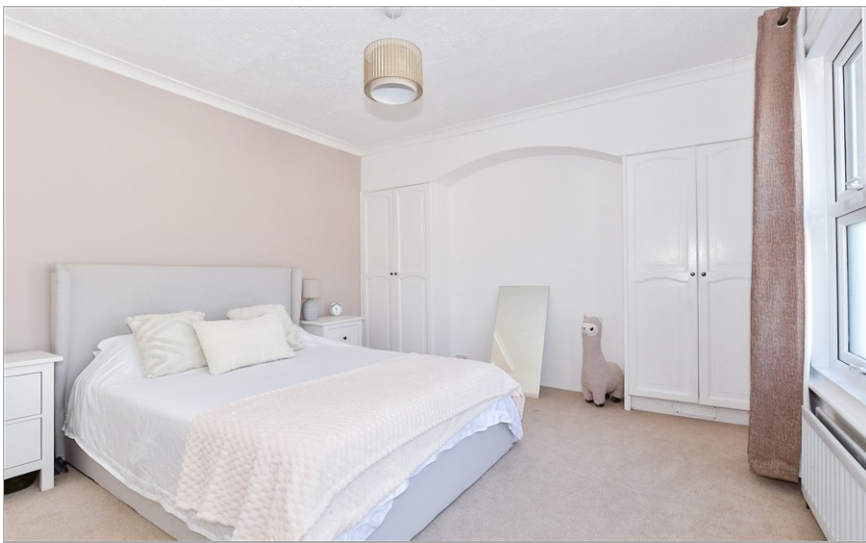
**Heathorn Street,  
Maidstone, Kent ME14**

**OVER 60?**

Secure this property  
for up to **59% less!**

*Wards*  
Helping you move forwards





## Main features

- Deceptively spacious bay fronted Victorian house
- 2 living rooms, cellar ripe for conversion
- Generously sized double bedrooms
- Situated in a quiet cul-de-sac
- Easy access to the town centre, local amenities, rail and motorway connections

## Accommodation

### GROUND FLOOR

Porch  
Lounge: 12'9 x 12'1 (3.89m x 3.69m)  
Dining Room: 12'8 x 11'9 (3.86m x 3.58m)  
Kitchen: 14'8 x 7'5 (4.47m x 2.26m)

### BASEMENT

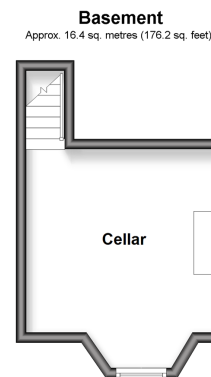
Cellar: 12'8 x 11'7 (3.86m x 3.53m)

### FIRST FLOOR

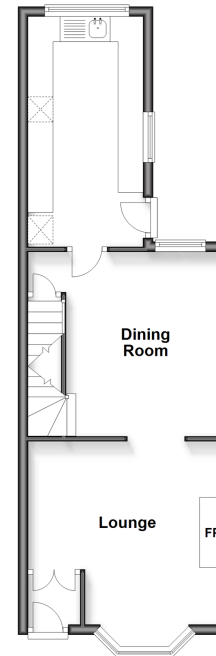
Landing  
Bedroom 1: 15'10 x 11'10 (4.83m x 3.61m)  
Bedroom 2: 12'11 x 9'8 (3.94m x 2.95m)  
Bedroom 3: 10'7 x 9'7 (3.23m x 2.92m)  
Bathroom

### OUTSIDE

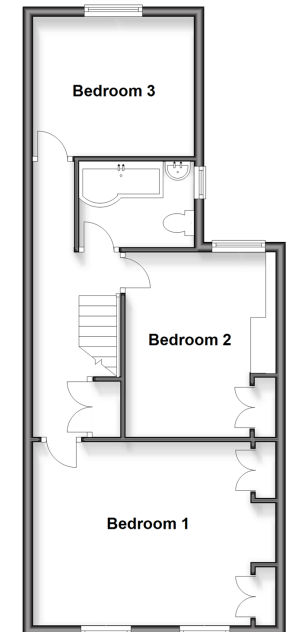
Rear Garden  
Front Garden



**Ground Floor**  
Approx. 40.1 sq. metres (431.3 sq. feet)



**First Floor**  
Approx. 51.3 sq. metres (551.8 sq. feet)



**Call Maidstone - 01622 683737 ■ wardsofkent.co.uk**

■ Legal advice should be taken to verify fixtures/fittings, planning, alterations and/or lease details  
■ Through a Homewise Home For Life Plan people aged 60+ can secure this property for up to 50% less, by purchasing a Lifetime Lease.

■ Appliances & services are untested, dimensions are approximate and floor plans are not to scale