



**Guide Price**  
**£250,000**

**Leasehold**

2x  2x  1x 

**Scotney Gardens, St.**  
**Peter Street, Maidstone,**  
**Kent ME16**

**OVER 60?**

Secure this property  
for up to **59% less!**

*Wards*  
Helping you move forwards



## Main features

- Fourth/fifth floor duplex apartment, chain free
- Spacious throughout, long lease
- Allocated parking with the gated residence
- Walking distance to Maidstone town centre and transport links
- Perfect for first time buyers and investors alike

## Accommodation

### FOURTH FLOOR

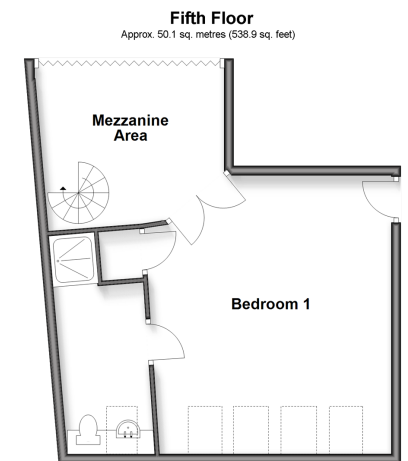
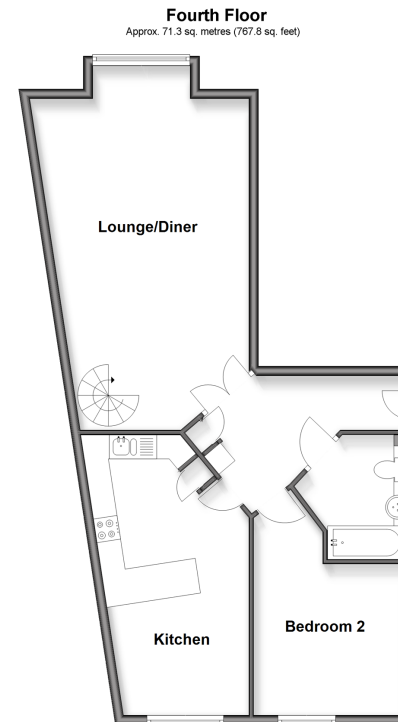
Hallway  
Bathroom  
Bedroom 2: 15'0 x 10'0 (4.58m x 3.05m)  
Kitchen: 19'0 x 10'0 (5.80m x 3.05m)  
Lounge/Diner: 24'11 x 15'0 (7.60m x 4.58m)

### FIFTH FLOOR

Bedroom 1: 18'11 x 16'0 (5.77m x 4.88m)  
En-Suite Shower Room: 15'0 x 6'0 (4.58m x 1.83m)  
Mezzanine Area

### OUTSIDE

Communal Areas  
Parking



**Call Maidstone - 01622 683737 ■ [wardsofkent.co.uk](http://wardsofkent.co.uk)**

■ Legal advice should be taken to verify fixtures/fittings, planning, alterations and/or lease details  
■ Through a Homewise Home For Life Plan people aged 60+ can secure this property for up to 50% less, by purchasing a Lifetime Lease.

■ Appliances & services are untested, dimensions are approximate and floor plans are not to scale