



OVER 60?

Secure this property
for up to **59% less!**

Price

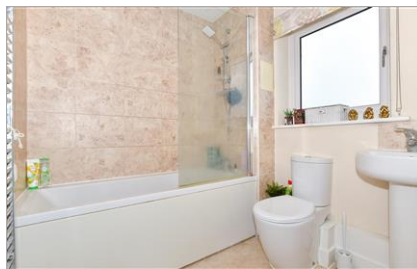
£200,000

Leasehold

2x  1x  1x 

**Hobart House, Ruskin
Grove, Maidstone, Kent
ME15**

Wards
Helping you move forwards



Main features

- Second floor apartment
- Stunning open plan kitchen/lounge/diner with Juliet balcony
- Residents parking for 2 cars
- Walking distance to local amenities and transport links
- Perfect for first time buyers, investors and professionals alike

Accommodation

SECOND FLOOR

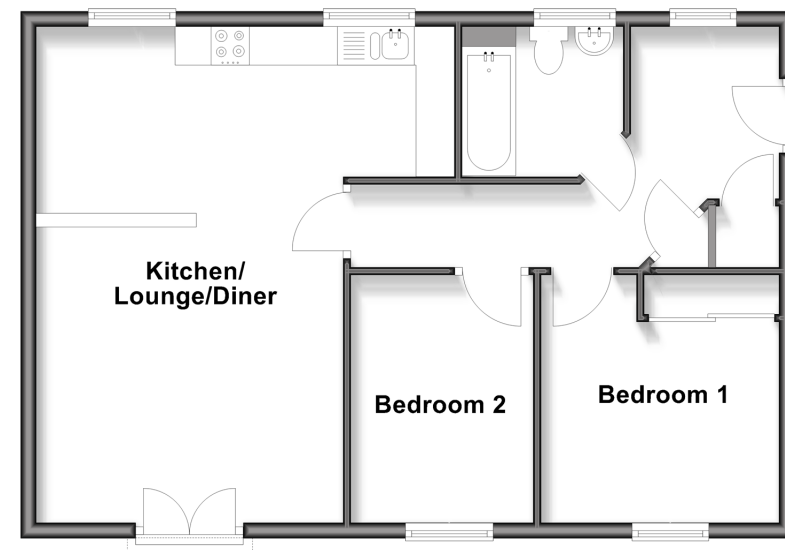
Hallway
 Kitchen/Lounge/Diner: 21'0 x 17'10 (6.41m x 5.44m)
 Juliet Balcony
 Bedroom 1: 10'0 x 10'0 (3.05m x 3.05m)
 Bedroom 2: 10'0 x 7'0 (3.05m x 2.14m)
 Bathroom

OUTSIDE

Communal Areas
 Allocated Parking

Second Floor

Approx. 62.4 sq. metres (672.1 sq. feet)



Call Maidstone - 01622 683737 ■ wardsofkent.co.uk

■ Legal advice should be taken to verify fixtures/fittings, planning, alterations and/or lease details
 ■ Through a Homewise Home For Life Plan people aged 60+ can secure this property for up to 59% less, by purchasing a Lifetime Lease.

■ Appliances & services are untested, dimensions are approximate and floor plans are not to scale