



Guide Price
£260,000

Freehold

2x  1x  2x 

**Hartnup Street,
Maidstone, Kent ME16**

OVER 60?

Secure this property
for up to **59% less!**

Wards
Helping you move forwards

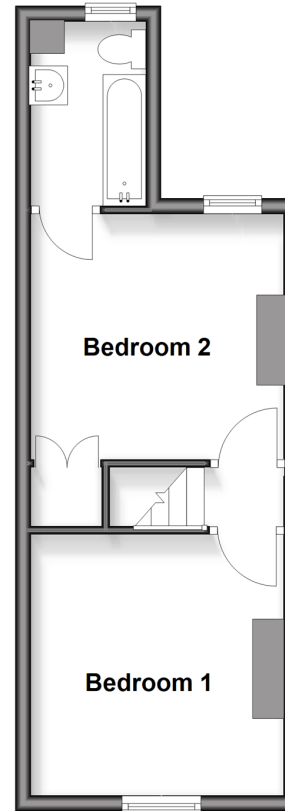
Ground Floor

Approx. 29.4 sq. metres (316.9 sq. feet)



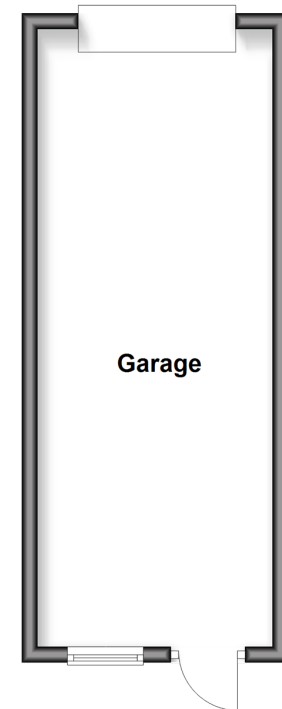
First Floor

Approx. 28.1 sq. metres (302.6 sq. feet)



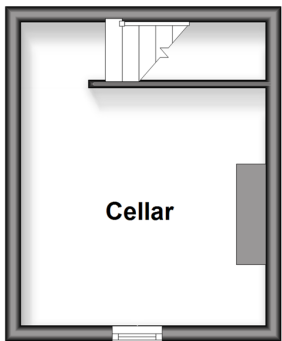
Outbuilding

Approx. 24.1 sq. metres (259.7 sq. feet)



Basement

Approx. 12.3 sq. metres (132.7 sq. feet)



Accommodation

GROUND FLOOR

Porch

Lounge: 10'11 x 10'0 (3.33m x 3.05m)

Kitchen/Dining Area: 18'0 x 9'0 (5.49m x 2.75m)

BASEMENT

Cellar: 13'0 x 10'0 (3.97m x 3.05m)

FIRST FLOOR

Landing

Bedroom 1: 10'11 x 10'0 (3.33m x 3.05m)

Bedroom 2: 10'0 x 10'0 (3.05m x 3.05m)

Bathroom

OUTBUILDING

Garage: 25'0 x 9'11 (7.63m x 3.02m)

OUTSIDE

Rear Garden

Front Garden



Main features

- Double glazing and central heating
- Useful & versatile cellar
- Open plan kitchen/dining area
- Garage with parking for 2 cars
- Easy access to local amenities and the town centre



Nearest Schools

Primary Schools: West Borough Primary 0.2 miles, St Francis' Catholic Primary, Maidstone 0.5 miles, Maidstone, St Michael's C of E Junior School 0.6 miles



Transport Information

Train Stations: East Farleigh 0.5 miles, Maidstone West 0.9 miles, Maidstone Barracks 1.0 miles



Address

Hartnup Street, Maidstone, Kent ME16



Directions

For directions to this property please contact us.



Call Maidstone Branch 01622 683737 ■ wardsofkent.co.uk



- Legal advice should be taken to verify fixtures/fittings, planning, alterations and/or lease details
- Appliances & services are untested, dimensions are approximate and floor plans are not to scale
- Through a Homewise Home For Life Plan people aged 60+ can secure this property for up to 50% less, by purchasing a Lifetime Lease.



13140313/20250902/BUD1/BUD1