



Price
£525,000

Freehold

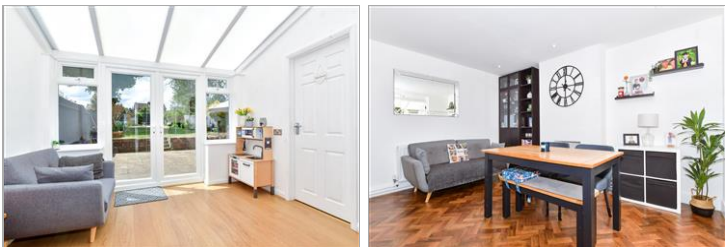
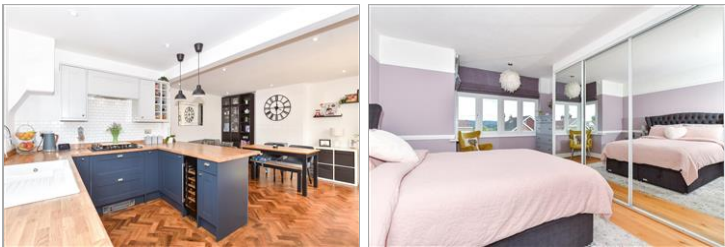
3x  1x  2x 

**Ash Grove, Maidstone,
Kent ME16**

OVER 60?

Secure this property
for up to **59% less!**

Wards
Helping you move forwards



Main features

- 1930's built house
- Double glazing and central heating, large rear garden
- Prime Allington location
- Open plan fitted kitchen/diner
- Ideal location for local amenities, schools and recreational requirements

Accommodation

GROUND FLOOR

Entrance Porch

Hallway

Lounge: 15'8 x 11'8 (4.78m x 3.56m)

Kitchen/Diner: 19'7 (5.97m) x 14'2 (4.32m) narrowing to 13'9 (4.19m)

Conservatory: 10'8 x 9'6 (3.25m x 2.90m)

Cloakroom/Utility Area

FIRST FLOOR

Landing

Bedroom 1: 16'2 x 11'8 (4.93m x 3.56m)

Bedroom 2: 13'9 x 9'7 (4.19m x 2.92m)

Bedroom 3: 10'4 x 9'6 (3.15m x 2.90m)

Bathroom

OUTSIDE

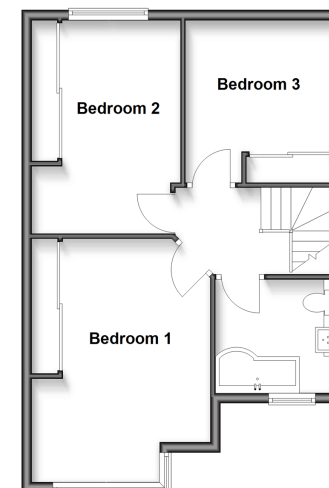
Front and Rear Gardens

Driveway

Ground Floor
Approx. 64.6 sq. metres (695.5 sq. feet)



First Floor
Approx. 50.1 sq. metres (538.8 sq. feet)



Call Maidstone - 01622 683737 ■ wardsofkent.co.uk

- Legal advice should be taken to verify fixtures/fittings, planning, alterations and/or lease details
- Appliances & services are untested, dimensions are approximate and floor plans are not to scale
- Through a Homewise Home For Life Plan people aged 60+ can secure this property for up to 59% less, by purchasing a Lifetime Lease.



13157495/20250606/CV/DS