



OVER 60?

Secure this property
for up to **59% less!**

Price

£160,000

Leasehold

2x  1x  1x 

**Pevensey Court, St.
Peter's Street,
Maidstone, Kent ME16**

Wards
Helping you move forwards



Main features

- 3rd floor apartment within walking distance to town
- Allocated parking, chain free
- Double glazing and Economy 7 heating
- Easy access to the motorway network and a 5 minute walk to the train station
- Modern fitted kitchen and bathroom

Accommodation

THIRD FLOOR

Hallway

Lounge: 14'11 x 14'5 (4.55m x 4.40m) narrowing to 8'5 x 11'2 (2.57m x 3.41m)

Kitchen: 8'6 x 7'9 (2.59m x 2.36m)

Bedroom 1: 14'0 x 11'0 (4.27m x 3.36m)

Bedroom 2: 10'0 x 7'5 (3.05m x 2.26m)

Bathroom: 11'3 x 5'7 (3.43m x 1.70m)

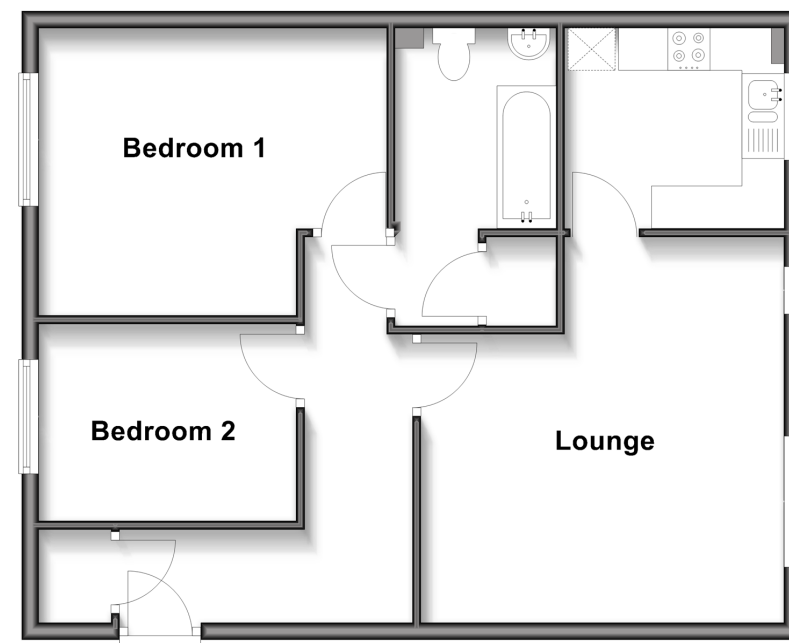
OUTSIDE

Communal Gardens

1 Off Road Parking Bay

Third Floor

Approx. 63.5 sq. metres (683.8 sq. feet)



Call Maidstone - 01622 683737 ■ wardsofkent.co.uk

■ Legal advice should be taken to verify fixtures/fittings, planning, alterations and/or lease details
 ■ Through a Homewise Home For Life Plan people aged 60+ can secure this property for up to 59% less, by purchasing a Lifetime Lease.

■ Appliances & services are untested, dimensions are approximate and floor plans are not to scale