



**Price**  
**£275,000**

**Freehold**

2x  1x  1x 

**Millers Wharf,  
Maidstone, Kent ME15**

**OVER 60?**

Secure this property  
for up to **59% less!**

*Wards*  
Helping you move forwards





## Main features

- Beautifully presented with neutral decor throughout
- Quiet riverside and cul-de-sac location
- Sunny rear garden with room to entertain
- Driveway to rear with ample parking
- Set in close proximity to local schools, shops and amenities

## Accommodation

### GROUND FLOOR

Porch

Lounge: 14'6 x 11'0 (4.42m x 3.36m)

Kitchen/Diner: 11'0 x 7'8 (3.36m x 2.34m)

### FIRST FLOOR

Landing

Bedroom 1: 11'3 x 8'9 (3.43m x 2.67m)

Bedroom 2: 8'6 x 6'0 (2.59m x 1.83m)

Bathroom

### OUTSIDE

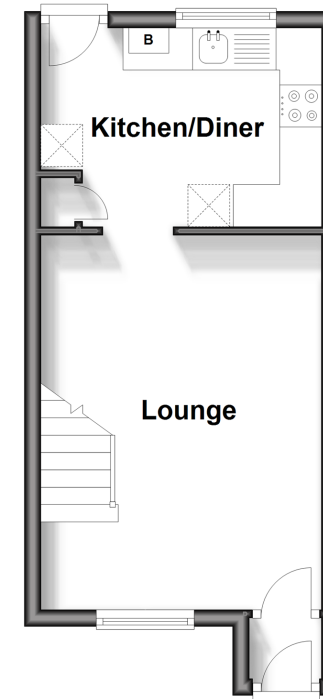
Rear Garden

Front Garden

Parking To Rear

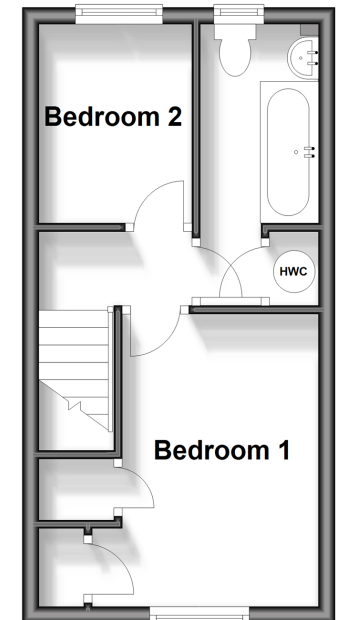
### Ground Floor

Approx. 23.9 sq. metres (257.5 sq. feet)



### First Floor

Approx. 23.4 sq. metres (252.2 sq. feet)



**Call Maidstone - 01622 683737 ■ [wardsofkent.co.uk](http://wardsofkent.co.uk)**

■ Legal advice should be taken to verify fixtures/fittings, planning, alterations and/or lease details  
 ■ Through a Homewise Home For Life Plan people aged 60+ can secure this property for up to 59% less, by purchasing a Lifetime Lease.

■ Appliances & services are untested, dimensions are approximate and floor plans are not to scale



13158792/20250419/CV/TB