



Guide Price
£350,000

Freehold

2x  1x  1x 

**Trevor Drive, Allington,
Maidstone, Kent ME16**

OVER 60?

Secure this property
for up to **59% less!**

Wards
Helping you move forwards



Main features

- Set within the popular Allington suburb
- Chain free
- Double glazing and central heating
- Breakfast room and sun room additions overlooking garden
- Tandem garage with car port and driveway for numerous vehicles

Accommodation

GROUND FLOOR

Hallway
 Lounge: 15'2 x 10'3 (4.63m x 3.13m)
 Sun Room: 9'5 x 7'6 (2.87m x 2.29m)
 Conservatory: 9'5 x 7'6 (2.87m x 2.29m)
 Kitchen: 10'8 x 8'9 (3.25m x 2.67m)
 Breakfast Room: 11'4 x 8'8 (3.46m x 2.64m)
 Bedroom 1: 12'0 x 10'4 (3.66m x 3.15m)
 Bedroom 2: 8'10 x 8'2 (2.69m x 2.49m)
 Shower Room

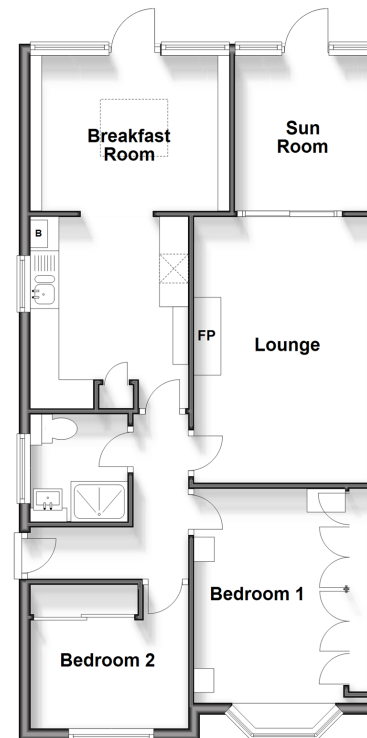
OUTBUILDING

Garage: 25'9 x 10'0 (7.85m x 3.05m)

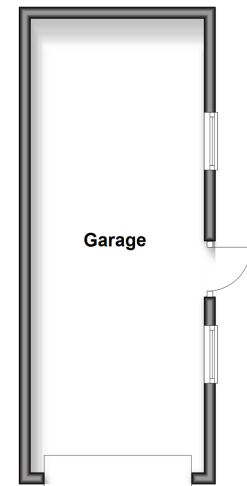
OUTSIDE

Rear Garden
 Front Garden

Ground Floor
 Approx. 68.4 sq. metres (736.1 sq. feet)



Outbuilding
 Approx. 23.9 sq. metres (257.5 sq. feet)



Call Maidstone - 01622 683737 ■ wardsofkent.co.uk

■ Legal advice should be taken to verify fixtures/fittings, planning, alterations and/or lease details
 ■ Through a Homewise Home For Life Plan people aged 60+ can secure this property for up to 59% less, by purchasing a Lifetime Lease.

■ Appliances & services are untested, dimensions are approximate and floor plans are not to scale



13158795/20250423/DS/DS