



OVER 60?

Secure this property
for up to **59% less!**

Price

£475,000

Freehold

4x  1x  2x 

**Chilham Road,
Maidstone, Kent ME16**

Wards
Helping you move forwards



Main features

- Beautifully extended house
- Cul-de-sac location
- Modern open plan kitchen/dining area
- Beautiful landscaped garden with garage en-bloc
- Prime location for commuting

Accommodation

GROUND FLOOR

Entrance Porch

Cloakroom: 5'9 x 2'9 (1.75m x 0.84m)

Lounge: 14'8 x 11'9 (4.47m x 3.58m)

Kitchen/Dining Area: 22'2 x 15'7 (6.76m x 4.75m)

FIRST FLOOR

Landing

Bedroom 1: 14'9 x 11'2 (4.50m x 3.41m)

Bedroom 2: 16'0 x 8'2 (4.88m x 2.49m)

Bedroom 3: 9'1 x 5'9 (2.77m x 1.75m)

Bedroom 4: 11'8 x 3'9 (3.56m x 1.14m)

Shower Room: 9'1 x 5'8 (2.77m x 1.73m)

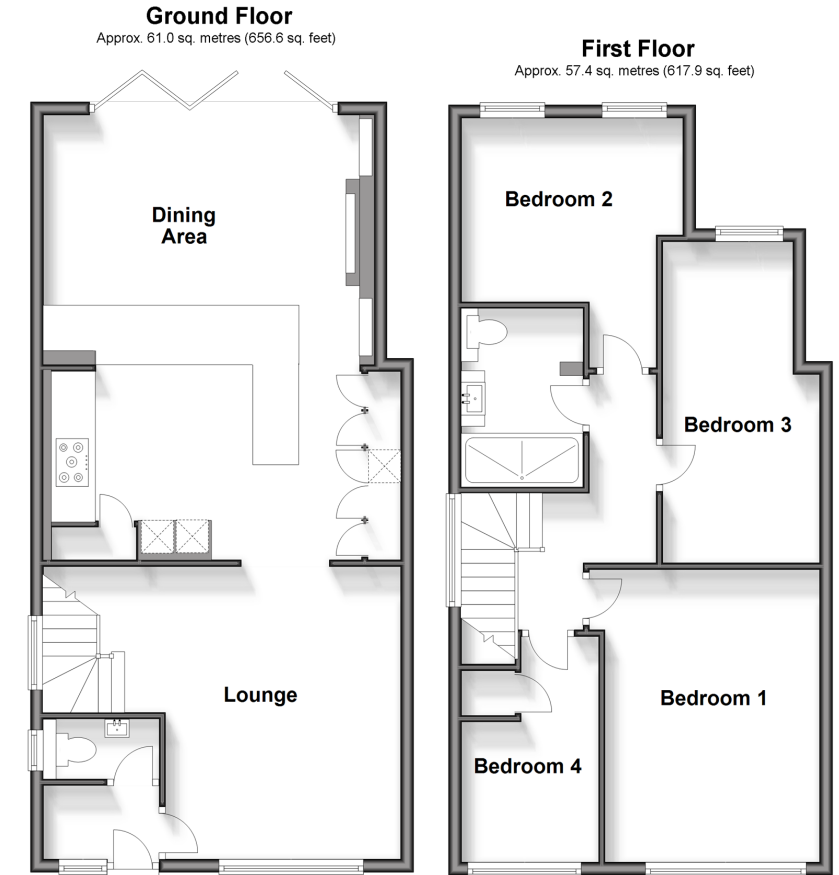
OUTSIDE

Rear Garden

Front Garden

Off Road Parking

Garage En-Bloc



Call Maidstone - 01622 683737 ■ wardsof Kent.co.uk

- Legal advice should be taken to verify fixtures/fittings, planning, alterations and/or lease details
- Appliances & services are untested, dimensions are approximate and floor plans are not to scale
- Through a Homewise Home For Life Plan people aged 60+ can secure this property for up to 59% less, by purchasing a Lifetime Lease.



13145652/20250329/CV/KW