



OVER 60?

Secure this property
for up to **59% less!**

Guide Price
£175,000

Leasehold

2x  1x  1x 

**Boarley Court, Sandling
Lane, Penenden Heath,
Maidstone, Kent ME14**

Wards
Helping you move forwards



Main features

- Spacious top floor flat
- Far reaching panoramic views
- Lift access and useful garage en-bloc
- Ideal for access to amenities
- Picturesque and very convenient location

Accommodation

TOP FLOOR

Hallway

Lounge: 16'1 x 11'7 (4.91m x 3.53m)

Kitchen: 10'0 x 6'9 (3.05m x 2.06m)

Bedroom 1: 13'6 x 10'8 (4.12m x 3.25m)

Bedroom 2: 9'2 x 8'2 (2.80m x 2.49m)

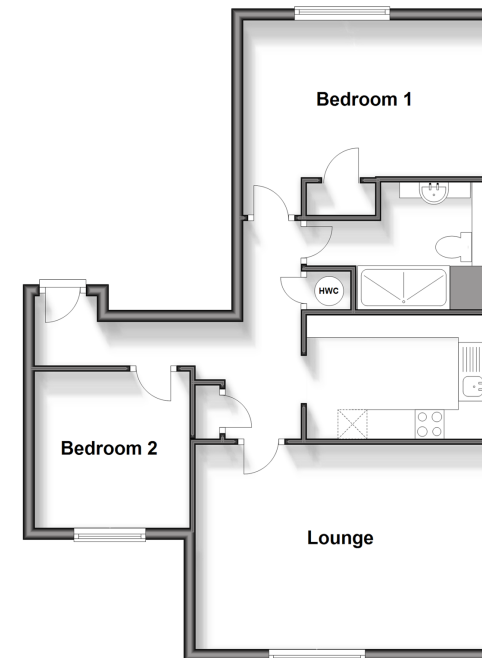
Shower Room: 10'0 x 7'1 (3.05m x 2.16m)

OUTSIDE

Communal Gardens

Garage En Bloc

Top Floor
Approx. 60.0 sq. metres (646.2 sq. feet)



Call Maidstone - 01622 683737 ■ wardsofkent.co.uk

- If buying to let, the energy rating will need to be improved to at least 'E' rating before you can let the property
- Appliances & services are untested, dimensions are approximate and floor plans are not to scale

- Legal advice should be taken to verify fixtures/fittings, planning, alterations and/or lease details
- Through a Homewise Home For Life Plan people aged 60+ can secure this property for up to 59% less, by purchasing a Lifetime Lease.