



Guide Price

£475,000

Freehold

4x  2x  2x 

**Park Avenue, Maidstone,
Kent ME14**

OVER 60?

Secure this property
for up to **59% less!**

Wards
Helping you move forwards



Main features

- Semi-detached family house
- Located within the ever popular Penenden Heath suburb of Maidstone
- Chain free, downstairs cloakroom and family bathroom
- Double glazing and central heating
- Easy access to the town centre and local amenities

Accommodation

GROUND FLOOR

Entrance Porch
Lounge: 23'0 x 16'0 (7.02m x 4.88m)
Dining Area: 12'0 x 10'0 (3.66m x 3.05m)
Kitchen: 10'0 x 8'0 (3.05m x 2.44m)
Lobby
Cloakroom
Utility Room: 6'0 x 5'0 (1.83m x 1.53m)

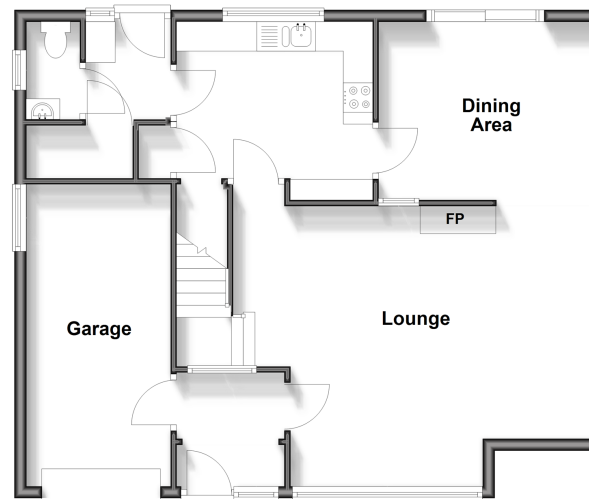
FIRST FLOOR

Landing
Bedroom 1: 19'0 x 11'0 (5.80m x 3.36m)
En-Suite Bathroom
Bedroom 2: 15'0 x 9'11 (4.58m x 3.02m)
Bedroom 3: 10'0 x 7'0 (3.05m x 2.14m)
Bedroom 4: 7'0 x 5'0 (2.14m x 1.53m)
Bathroom

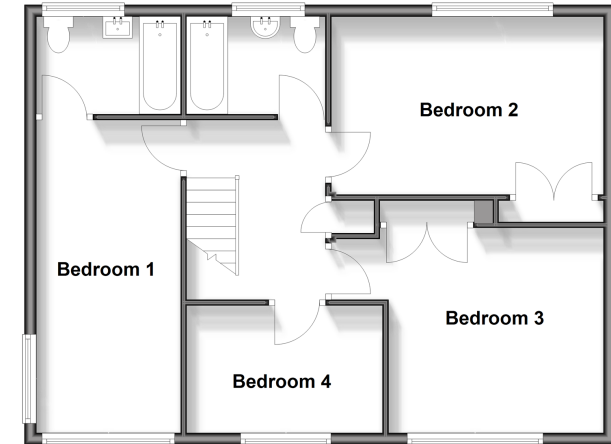
OUTSIDE

Rear Garden
Front Garden
Driveway
Integral Garage: 18'0 x 8'0 (5.49m x 2.44m)

Ground Floor
Approx. 73.6 sq. metres (792.6 sq. feet)



First Floor
Approx. 68.3 sq. metres (735.0 sq. feet)



Call Maidstone - 01622 683737 ■ wardsofkent.co.uk

■ Legal advice should be taken to verify fixtures/fittings, planning, alterations and/or lease details
■ Through a Homewise Home For Life Plan people aged 60+ can secure this property for up to 59% less, by purchasing a Lifetime Lease.

■ Appliances & services are untested, dimensions are approximate and floor plans are not to scale