



Price

£220,000

Leasehold

1x  1x  1x 

**Leander Heights, Mill
Wood, Maidstone, Kent
ME14**

Wards
Helping you move forwards



Main features

- Tenth floor apartment with spacious balcony with amazing views
- Open plant fitted kitchen/lounge area
- Double glazed with views over the park/river
- Allocated parking space
- Easy access to the town centre, motorway and rail network

Accommodation

TENTH FLOOR

Hallway

Kitchen/Lounge: 20'0 x 13'0 (6.10m x 3.97m)

Balcony

Bedroom : 16'11 x 11'0 (5.16m x 3.36m)

En-Suite Bathroom: 7'0 x 6'0 (2.14m x 1.83m)

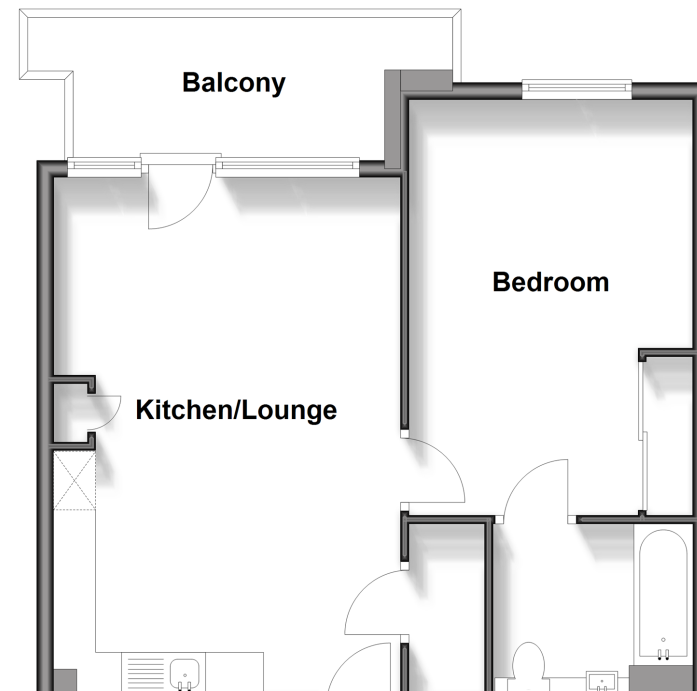
OUTSIDE

Communal Roof Terrace

Allocated Parking

Tenth Floor

Approx. 49.5 sq. metres (532.9 sq. feet)



Call Maidstone - 01622 683737 ■ wardsofkent.co.uk

■ Legal advice should be taken to verify fixtures/fittings, planning, alterations and/or lease details

■ Appliances & services are untested, dimensions are approximate and floor plans are not to scale



13158753/20250314/CV/DS