



**OVER 60?**

Secure this property  
for up to **59% less!**

**Price**

**£180,000**

**Leasehold**

2x  2x  1x 

**Stanhope House,  
Rockwell Court, Tovil,  
Maidstone, Kent ME15**

*Wards*  
Helping you move forwards





## Main features

- Attractive modern top floor apartment
- Well presented interior, spacious feel throughout
- Allocated parking plus numerous visitor bays
- Easy access for the town centre or countryside
- Close to Lidl, Tesco and a wide range of amenities including train stations

## Accommodation

### TOP FLOOR

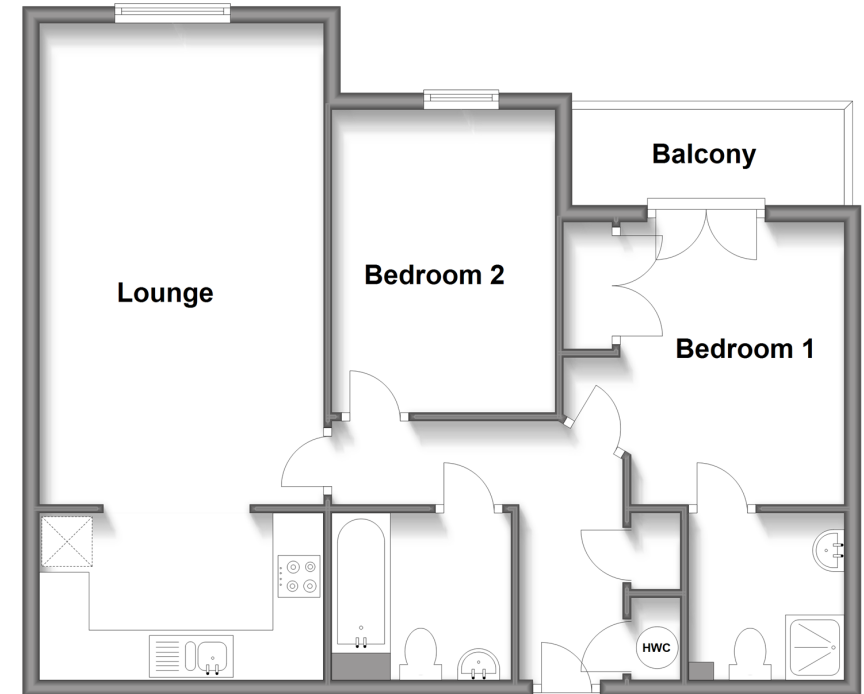
Hallway  
 Lounge: 18'6 x 11'0 (5.64m x 3.36m)  
 Kitchen: 10'8 x 6'5 (3.25m x 1.96m)  
 Bedroom 1: 11'3 x 11'1 (3.43m x 3.38m)  
 Balcony  
 En-Suite Shower Room: 6'11 x 6'0 (2.11m x 1.83m)  
 Bedroom 2: 11'8 x 8'6 (3.56m x 2.59m)  
 Bathroom

### OUTSIDE

Allocated Parking

### Top Floor

Approx. 63.8 sq. metres (686.6 sq. feet)



Call Maidstone - 01622 683737 ■ [wardsofkent.co.uk](http://wardsofkent.co.uk)

■ Legal advice should be taken to verify fixtures/fittings, planning, alterations and/or lease details  
 ■ Through a Homewise Home For Life Plan people aged 60+ can secure this property for up to 59% less, by purchasing a Lifetime Lease.

■ Appliances & services are untested, dimensions are approximate and floor plans are not to scale