



Price
£350,000

Freehold

3x  1x  2x 

**West Walk, Maidstone,
Kent ME16**

OVER 60?

Secure this property
for up to **59% less!**

Wards
Helping you move forwards



Main features

- 1950's style house with off road parking
- Large rear garden with conifer tree screen
- Double glazing and central heating
- Improvements include a recently installed boiler, bathroom, radiators and driveway to mention a few
- Easy access to local amenities, schools, station and town centre

Accommodation

GROUND FLOOR

Hallway
Cloakroom
Dining Room: 11'9 x 9'2 (3.58m x 2.80m)
Lounge: 14'0 x 11'9 (4.27m x 3.58m)
Kitchen: 10'5 x 8'2 (3.18m x 2.49m)

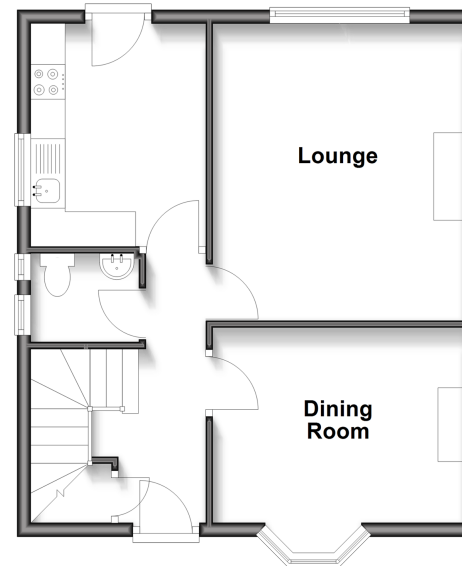
FIRST FLOOR

Landing
Bedroom 1: 14'3 x 12'0 (4.35m x 3.66m)
Bedroom 2: 12'1 x 9'2 (3.69m x 2.80m)
Bedroom 3: 9'6 x 8'3 (2.90m x 2.52m)
Bathroom

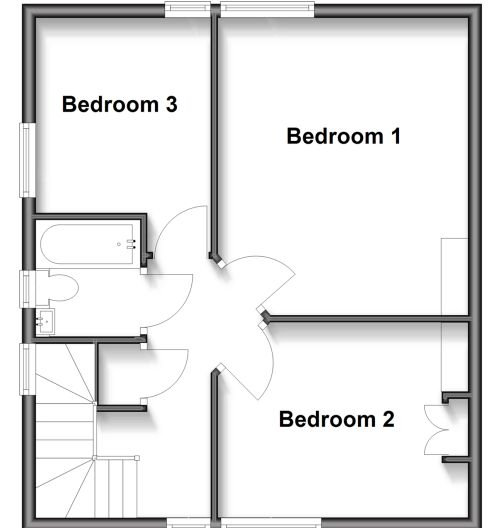
OUTSIDE

Rear Garden
Front Garden
Off Road Parking

Ground Floor
Approx. 45.3 sq. metres (487.4 sq. feet)



First Floor
Approx. 45.2 sq. metres (486.0 sq. feet)



Call Maidstone - 01622 683737 ■ wardsofkent.co.uk

■ Legal advice should be taken to verify fixtures/fittings, planning, alterations and/or lease details
■ Through a Homewise Home For Life Plan people aged 60+ can secure this property for up to 59% less, by purchasing a Lifetime Lease.

■ Appliances & services are untested, dimensions are approximate and floor plans are not to scale