



OVER 60?

Secure this property
for up to **59% less!**

Price

£285,000

Leasehold

2x  2x  1x 

**Leander Heights, Mill
Wood, Maidstone, Kent
ME14**

Wards
Helping you move forwards



Main features

- Impressive, spacious 8th floor apartment
- Fantastic rear facing balcony with stunning views
- Hi specification kitchen and bathrooms
- Secure underground parking, attractive roof garden
- Superb location, ideal access for motorways, Maidstone East station and riverside walks

Accommodation

EIGHTH FLOOR

Hallway

Kitchen/Lounge: 28'0 x 11'0 (8.54m x 3.36m)

Balcony

Bedroom 1: 20'0 x 10'0 (6.10m x 3.05m)

En-Suite Shower Room: 7'10 x 6'0 (2.39m x 1.83m)

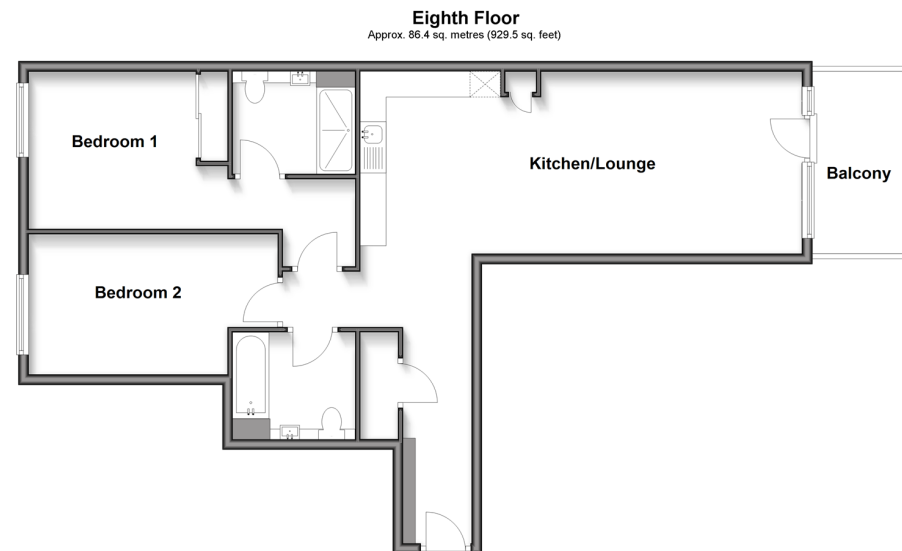
Bedroom 2: 15'0 x 9'0 (4.58m x 2.75m)

Bathroom: 7'0 x 6'0 (2.14m x 1.83m)

OUTSIDE

Allocated Parking Space

Communal Grounds



Call Maidstone - 01622 683737 ■ wardsofkent.co.uk

■ Legal advice should be taken to verify fixtures/fittings, planning, alterations and/or lease details
 ■ Through a Homewise Home For Life Plan people aged 60+ can secure this property for up to 59% less, by purchasing a Lifetime Lease.

■ Appliances & services are untested, dimensions are approximate and floor plans are not to scale



13158692/20250212/MB/MB