



Guide Price
£275,000

Freehold

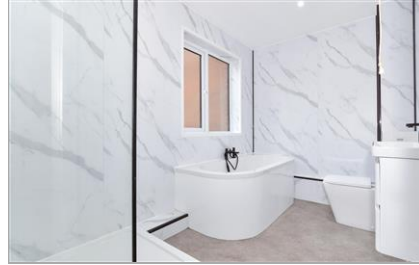
3x  1x  1x 

**The Mews, Lesley Place,
Buckland Hill,
Maidstone, Kent ME16**

OVER 60?

Secure this property
for up to **59% less!**

Wards
Helping you move forwards



Main features

- **Accommodation arranged over 3 floors**
- **Chain free**
- **Allocated parking for residents only**
- **Lounge overlooking the garden**
- **Walking distance to the town centre and rail station**

Accommodation

GROUND FLOOR

Kitchen: 11'2 (3.41m) x 10'6 (3.20m) narrowing to 6'5 (1.96m)
Lounge: 16'4 x 11'4 (4.98m x 3.46m)

FIRST FLOOR

Landing
Bedroom 1: 13'1 x 11'4 (3.99m x 3.46m)
Bathroom

SECOND FLOOR

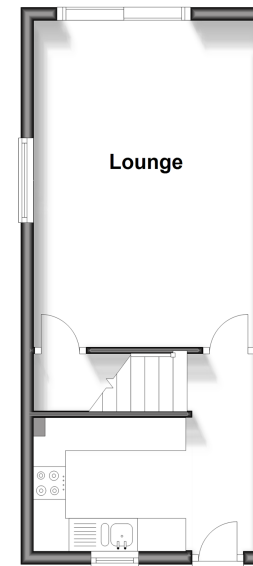
Landing
Bedroom 2: 13'1 x 11'3 (3.99m x 3.43m)
Bedroom 3: 11'4 x 6'7 (3.46m x 2.01m)

OUTSIDE

Rear Garden
Residents Parking
Communal Grounds

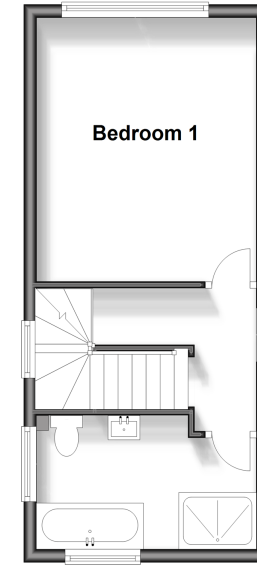
Ground Floor

Approx. 27.8 sq. metres (299.7 sq. feet)



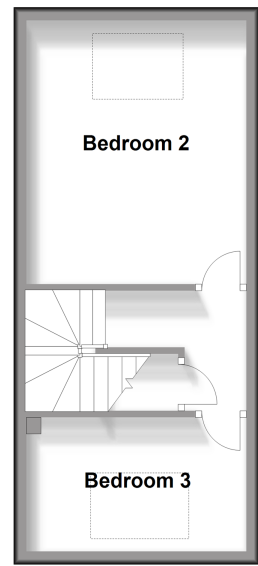
First Floor

Approx. 28.1 sq. metres (303.0 sq. feet)



Second Floor

Approx. 28.1 sq. metres (302.6 sq. feet)



Call Maidstone - 01622 683737 ■ wardsofkent.co.uk

■ Legal advice should be taken to verify fixtures/fittings, planning, alterations and/or lease details
■ Through a Homewise Home For Life Plan people aged 60+ can secure this property for up to 59% less, by purchasing a Lifetime Lease.

■ Appliances & services are untested, dimensions are approximate and floor plans are not to scale



13158163/20250306/CA/DS