



Price

£230,000

Leasehold

2x  2x  1x 

**Bank Street, Maidstone,
Kent ME14**

OVER 60?

Secure this property
for up to **59% less!**

Wards
Helping you move forwards



Main features

- First floor apartment with en-suite facilities
- Roof terrace
- Central town location, walking distance to shops and stations
- No onward chain
- The property is very spacious throughout and benefits from an open plan kitchen/lounge

Accommodation

FIRST FLOOR

Hallway

Kitchen/Lounge Area: 27'0 x 21'10
(8.24m x 6.66m)

Bedroom 1: 13'0 x 8'0 (3.97m x 2.44m)

En-Suite Shower Room: 5'11 x 5'8
(1.80m x 1.73m)

Bedroom 2: 13'11 x 8'10 (4.24m x 2.69m)

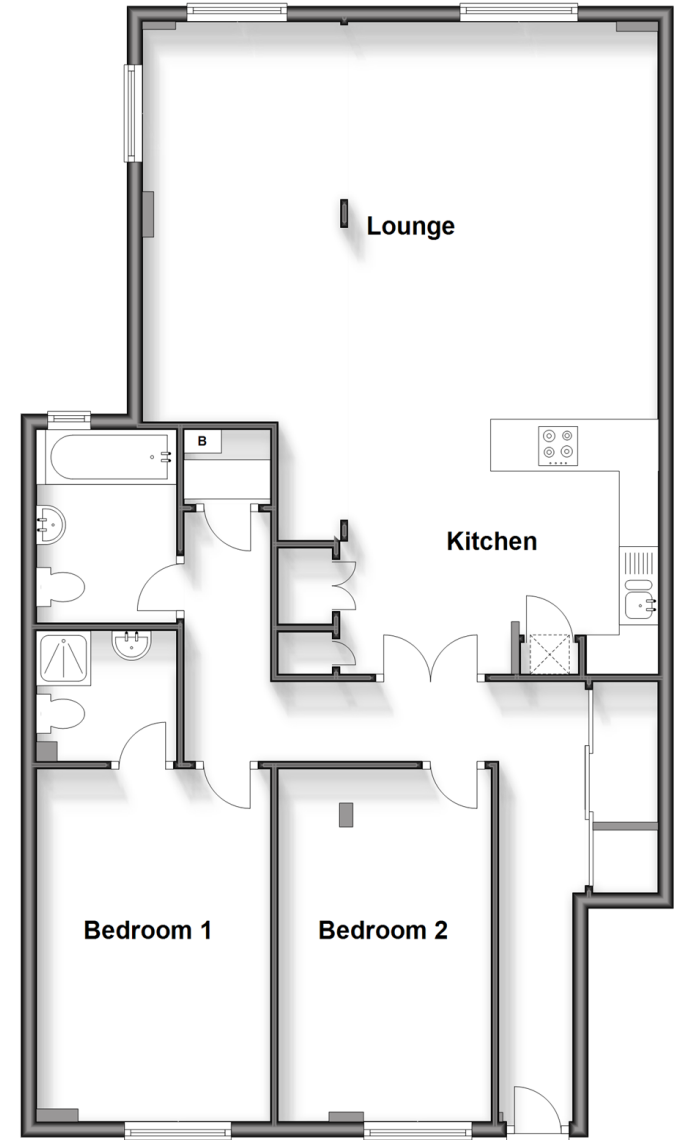
Bathroom : 7'0 x 5'10 (2.14m x 1.78m)

OUTSIDE

Roof Terrace

Communal Courtyard Area

First Floor
Approx. 101.9 sq. metres (1096.6 sq. feet)



Call Maidstone - 01622 683737 ■ wardsofkent.co.uk

- Legal advice should be taken to verify fixtures/fittings, planning, alterations and/or lease details
- Appliances & services are untested, dimensions are approximate and floor plans are not to scale
- Through a Homewise Home For Life Plan people aged 60+ can secure this property for up to 59% less, by purchasing a Lifetime Lease.



13158619/20250628/TB/CF