

OVER 60?

Secure this property
for up to **59% less!**



Price

£120,000

Leasehold

2x  1x  1x 

Hengist Court, Marsham Street, Maidstone,
Kent ME14

Wards
Helping you move forwards



Main features

- Over 60's 2nd floor flat
- Great social scene, communal lounge and laundry room
- Water bill included in charges
- 24 hour emergency call system, lift to all floors with manager on site Monday to Friday
- Rare position with views of a pretty church

Accommodation

SECOND FLOOR

Hallway

Lounge: 17'4 x 13'1 (5.29m x 3.99m)

Kitchen: 9'7 x 5'9 (2.92m x 1.75m)

Bedroom 1: 13'9 x 9'7 (4.19m x 2.92m)

Bedroom 2: 9'6 x 8'6 (2.90m x 2.59m)

Bathroom

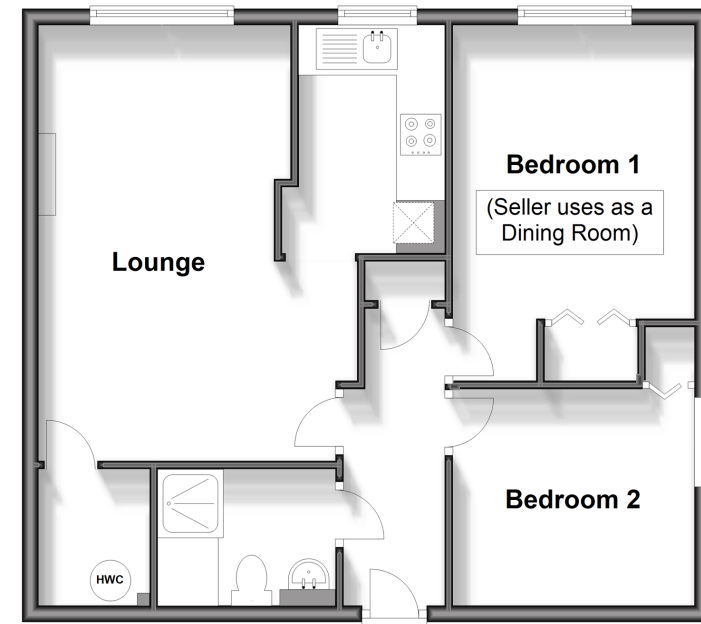
OUTSIDE

Communal Grounds

Residents Parking

Second Floor

Approx. 57.4 sq. metres (617.5 sq. feet)



Call Maidstone - 01622 683737 ■ wardsofkent.co.uk

■ Legal advice should be taken to verify fixtures/fittings, planning, alterations and/or lease details
 ■ Through a Homewise Home For Life Plan people aged 60+ can secure this property for up to 59% less, by purchasing a Lifetime Lease.

■ Appliances & services are untested, dimensions are approximate and floor plans are not to scale



13158543/20250124/CF/CF