



**Price**  
**£375,000**

**Freehold**

3x  2x  1x 

**Beaver Road, Allington,  
Maidstone, Kent ME16**

**OVER 60?**

Secure this property  
for up to **59% less!**

*Wards*  
Helping you move forwards



## Main features

- Set in a popular development
- Flexible family living space
- Allocated parking for 2 cars in private car park
- Prime location for commuting and local amenities, a short drive to multiple train stations to London and the Kent coast
- Excellent local primary and secondary schools within walking distance

## Accommodation

### GROUND FLOOR

- Porch
- Cloakroom
- Lounge: 16'6 x 15'4 (5.03m x 4.68m)
- Kitchen: 15'2 x 9'5 (4.63m x 2.87m)

### FIRST FLOOR

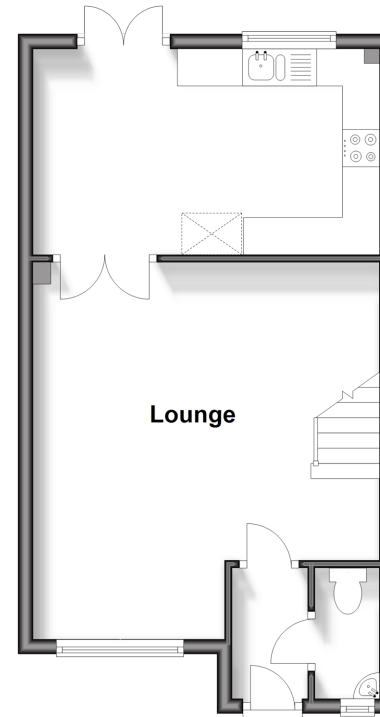
- Landing
- Bedroom 1: 13'5 x 8'8 (4.09m x 2.64m)
- En-Suite Shower Room: 5'1 x 3'4 (1.55m x 1.02m)
- Bedroom 2: 10'3 x 8'9 (3.13m x 2.67m)
- Bedroom 3: 8'9 x 6'1 (2.67m x 1.86m)
- Bathroom: 6'2 x 6'1 (1.88m x 1.86m)

### OUTSIDE

- Rear Garden
- Front Garden
- Allocated Parking x 2

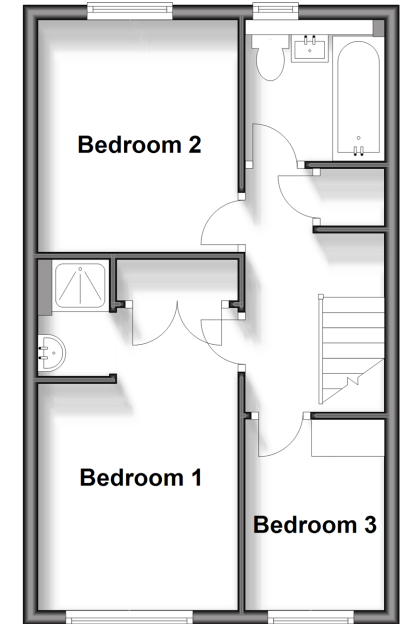
### Ground Floor

Approx. 38.8 sq. metres (417.6 sq. feet)



### First Floor

Approx. 37.3 sq. metres (401.2 sq. feet)



Call Maidstone - 01622 683737 ■ [wardsof Kent.co.uk](http://wardsof Kent.co.uk)

- The seller is a person connected with Wards as defined in the Estate Agents Act 1979
- Appliances & services are untested, dimensions are approximate and floor plans are not to scale

- Legal advice should be taken to verify fixtures/fittings, planning, alterations and/or lease details
- Through a Homewise Home For Life Plan people aged 60+ can secure this property for up to 59% less, by purchasing a Lifetime Lease.



13138402/20241017/CA/CF