



**Price**  
**£375,000**

**Freehold**

3x  2x  1x 

**Gooch Close, Allington,  
Maidstone, Kent ME16**

**OVER 60?**

Secure this property  
for up to **59% less!**

*Wards*  
Helping you move forwards





## Main features

- No onward chain
- Sought after Allington location
- Prime location for commuting, close to the station, town centre and motorway
- Popular cul-de-sac position
- College with frequent buses and the hospital a short walk away

## Accommodation

### GROUND FLOOR

Entrance Porch  
Cloakroom  
Lounge: 14'4 x 10'7 (4.37m x 3.23m)  
Dining Room: 10'1 x 7'3 (3.08m x 2.21m)  
Kitchen: 13'3 x 6'7 (4.04m x 2.01m)

### FIRST FLOOR

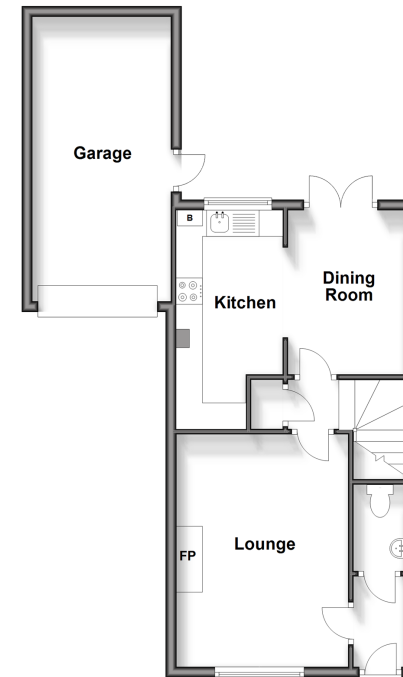
Landing  
Bedroom 1: 10'2 x 9'4 (3.10m x 2.85m)  
En-Suite Shower Room  
Bedroom 2: 11'5 x 6'8 (3.48m x 2.03m)  
Bedroom 3: 8'5 x 7'11 (2.57m x 2.41m)  
Bathroom

### OUTSIDE

Rear Garden  
Front Garden  
Driveway  
Garage

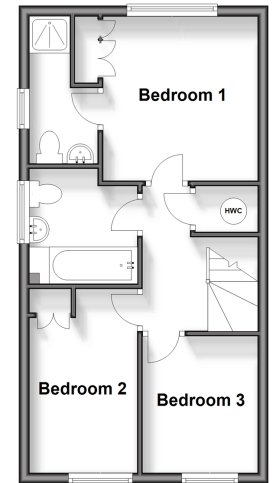
### Ground Floor

Approx. 52.2 sq. metres (561.6 sq. feet)



### First Floor

Approx. 37.7 sq. metres (406.1 sq. feet)



**Call Maidstone - 01622 683737 ■ [wardsofkent.co.uk](http://wardsofkent.co.uk)**

- If buying to let, the energy rating will need to be improved to at least 'E' rating before you can let the property
- Appliances & services are untested, dimensions are approximate and floor plans are not to scale

- Legal advice should be taken to verify fixtures/fittings, planning, alterations and/or lease details
- Through a Homewise Home For Life Plan people aged 60+ can secure this property for up to 59% less, by purchasing a Lifetime Lease.



13157135/20250114/DS/CF