



**Price**  
**£350,000**

**Freehold**

3x  1x  2x 

**Kent Avenue,  
Maidstone, Kent ME15**

**OVER 60?**

Secure this property  
for up to **59% less!**

*Wards*  
Helping you move forwards





## Main features

- Chain free, generous plot size
- Opportunity to extend subject to planning permission
- Great location for commuting, with in walking distance of local shops and primary schools
- Downstairs wet room and upstairs bathroom
- Separate dining area and lounge with an open fireplace for cosy fires

## Accommodation

### GROUND FLOOR

Porch  
Hallway  
Lounge: 14'0 x 13'2 (4.27m x 4.02m)  
Kitchen: 10'2 x 9'9 (3.10m x 2.97m)  
Dining Area: 10'0 x 9'3 (3.05m x 2.82m)  
Lean To: 12'3 x 8'6 (3.74m x 2.59m) narrowing to 6'5 x 3'8 (1.96m x 1.12m)  
Cloakroom: 8'0 x 5'7 (2.44m x 1.70m)

### FIRST FLOOR

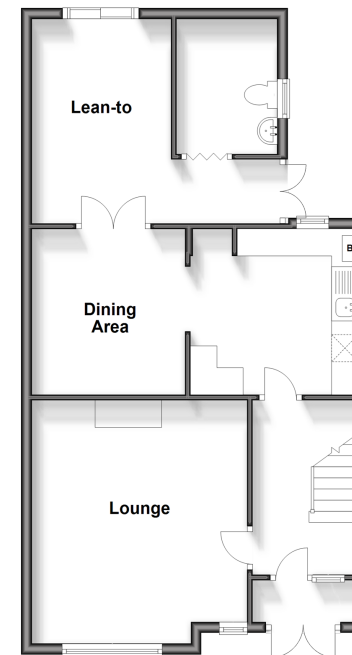
Landing  
Bedroom 1: 14'7 x 9'7 (4.45m x 2.92m)  
Bedroom 2: 11'1 x 9'9 (3.38m x 2.97m)  
Bedroom 3: 10'7 x 10'0 (3.23m x 3.05m)  
Bathroom: 7'1 x 5'5 (2.16m x 1.65m)

### OUTSIDE

Rear Garden  
Front Garden  
Off Road Parking

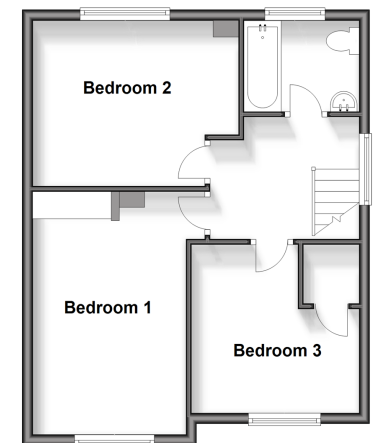
### Ground Floor

Approx. 63.6 sq. metres (684.3 sq. feet)



### First Floor

Approx. 45.7 sq. metres (491.4 sq. feet)



Call Maidstone - 01622 683737 ■ [wardsofkent.co.uk](http://wardsofkent.co.uk)

■ Legal advice should be taken to verify fixtures/fittings, planning, alterations and/or lease details  
■ Through a Homewise Home For Life Plan people aged 60+ can secure this property for up to 59% less, by purchasing a Lifetime Lease.

■ Appliances & services are untested, dimensions are approximate and floor plans are not to scale



13158487/20241116/CV/CF