



Price
£240,000

Freehold

1x  1x  1x 

**Mote Bungalows, Mote
Park, Maidstone, Kent
ME15**

Wards
Helping you move forwards



Main features

- Beautiful Idyllic location inside Mote Park
- Situated within walking distance to Madginford shops
- This property is an amazing opportunity for anyone downsizing
- Great back garden space
- A great location for commuting or to enjoy walks in the park

Accommodation

SPLIT-LEVEL GROUND FLOOR

Hallway

Bedroom: 13'9 x 11'2 (4.19m x 3.41m)

Kitchen: 7'10 x 7'3 (2.39m x 2.21m)

Lounge: 15'8 x 13'9 (4.78m x 4.19m)

Bathroom: 7'9 x 4'2 (2.36m x 1.27m)

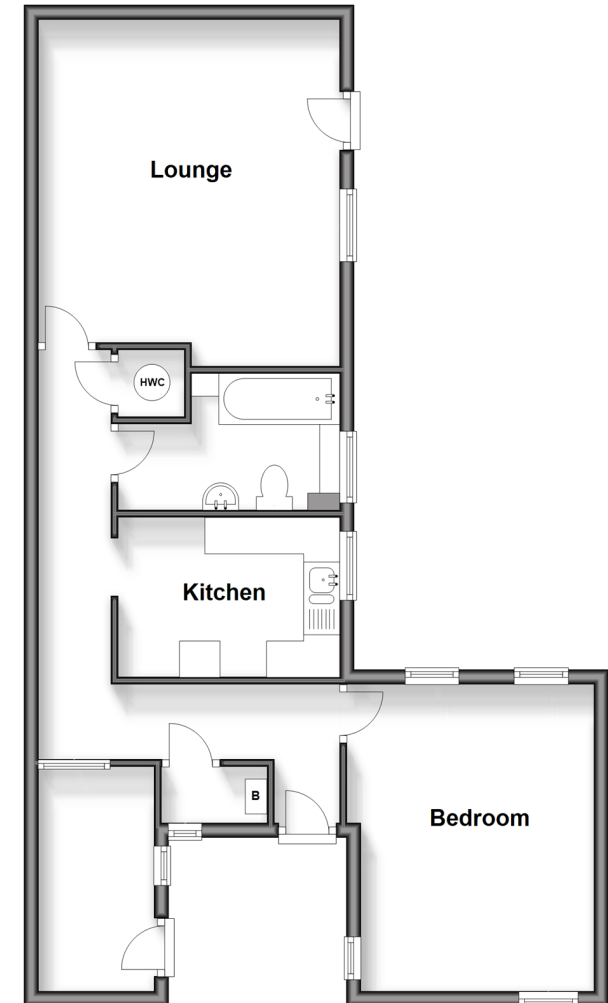
OUTSIDE

Rear Courtyard Garden

Front Garden

Split Level Ground Floor

Approx. 64.2 sq. metres (691.4 sq. feet)



Call Maidstone - 01622 683737 ■ wardsof Kent.co.uk

- Legal advice should be taken to verify fixtures/fittings, planning, alterations and/or lease details
- Appliances & services are untested, dimensions are approximate and floor plans are not to scale



12328751/20241002/CF/CF