



Price
£275,000

Freehold

2x  1x  2x 

**Scott Street, Maidstone,
Kent ME14**

OVER 60?

Secure this property
for up to **59% less!**

Wards
Helping you move forwards



Main features

- Stunning period style Victorian house
- Town centre location, ideal for Maidstone East station
- Superb double basement set up as a bar/games/recreation area
- Generous size rear garden
- Short walk from shops, easy access for motorways and a wide range of amenities

Accommodation

GROUND FLOOR

Lounge: 17'9 x 10'5 (5.41m x 3.18m)
 Dining Room: 13'0 x 10'5 (3.97m x 3.18m)
 Kitchen: 10'8 x 7'0 (3.25m x 2.14m)

BASEMENT

Cellar

FIRST FLOOR

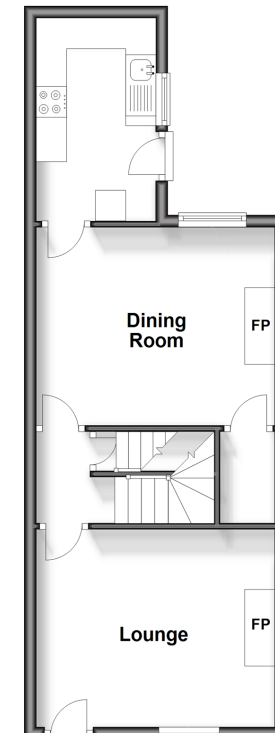
Landing
 Bedroom 1: 14'9 x 10'5 (4.50m x 3.18m)
 Bedroom 2: 10'6 x 9'0 (3.20m x 2.75m)
 Bathroom: 7'9 x 5'6 (2.36m x 1.68m)

OUTSIDE

Rear Garden
 Front Garden

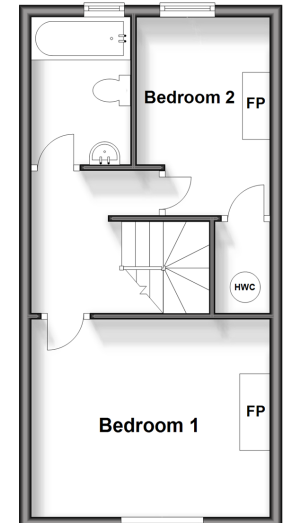
Ground Floor

Approx. 38.9 sq. metres (418.6 sq. feet)



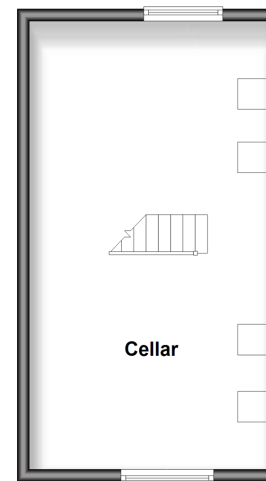
First Floor

Approx. 32.2 sq. metres (346.1 sq. feet)



Basement

Approx. 28.8 sq. metres (310.3 sq. feet)



Call Maidstone - 01622 683737 ■ wardsofkent.co.uk

■ Legal advice should be taken to verify fixtures/fittings, planning, alterations and/or lease details
 ■ Through a Homewise Home For Life Plan people aged 60+ can secure this property for up to 59% less, by purchasing a Lifetime Lease.

■ Appliances & services are untested, dimensions are approximate and floor plans are not to scale



13158474/20241101/SS1/MB