



**Price**  
**£225,000**

**Leasehold**

2x  1x  1x 

**Manor Fields,  
Cumberland Avenue,  
Maidstone, Kent ME15**

**OVER 60?**

Secure this property  
for up to **59% less!**

*Wards*  
Helping you move forwards



## Main features

- Ground floor maisonette with own entrance
- Private gated parking area to rear with allocated space
- Recently fitted carpets, boiler and fridge freezer
- En-suite shower room to bedroom 1
- Convenient location, ideal for access to amenities and a pleasant outlook over green space

## Accommodation

### GROUND FLOOR

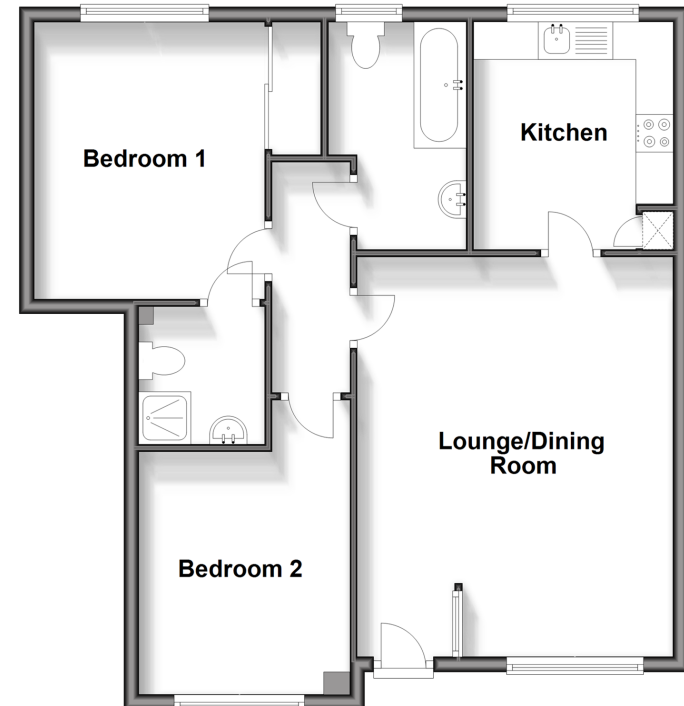
Hallway  
Lounge/Dining Room: 17'4 x 13'9 (5.29m x 4.19m)  
Kitchen: 9'9 x 8'8 (2.97m x 2.64m)  
Bedroom 1: 12'0 x 10'1 (3.66m x 3.08m)  
En-Suite Shower Room: 6'0 x 5'5 (1.83m x 1.65m)  
Bedroom 2: 12'8 x 9'3 (3.86m x 2.82m)  
Bathroom

### OUTSIDE

Allocated Parking Space  
Front Garden

### Ground Floor

Approx. 67.0 sq. metres (721.4 sq. feet)



Call Maidstone - 01622 683737 ■ [wardsofkent.co.uk](http://wardsofkent.co.uk)

■ Legal advice should be taken to verify fixtures/fittings, planning, alterations and/or lease details  
■ Through a Homewise Home For Life Plan people aged 60+ can secure this property for up to 59% less, by purchasing a Lifetime Lease.

■ Appliances & services are untested, dimensions are approximate and floor plans are not to scale



13158479/20240924/MB/MB