



**Price**  
**£475,000**

**Freehold**

4x  2x  1x 

**Caldecott Road,  
Maidstone, Kent ME16**

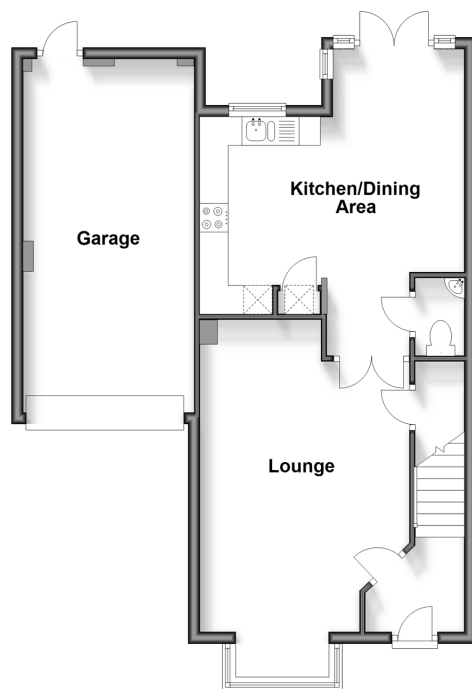
**OVER 60?**

Secure this property  
for up to **59% less!**

*Wards*  
Helping you move forwards

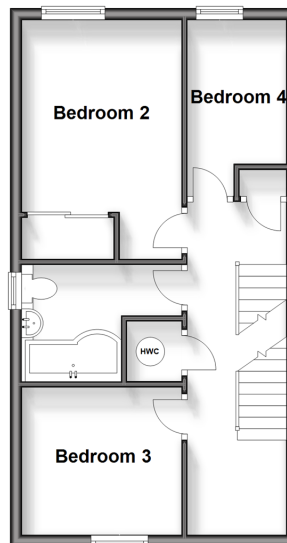
## Ground Floor

Approx. 64.0 sq. metres (689.1 sq. feet)



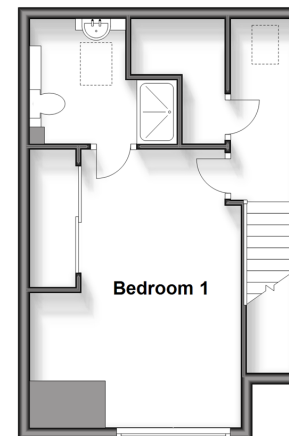
## First Floor

Approx. 41.7 sq. metres (448.6 sq. feet)



## Second Floor

Approx. 32.2 sq. metres (346.4 sq. feet)



## Accommodation

### GROUND FLOOR

Hallway  
Lounge: 17'0 x 16'2 (5.19m x 4.93m)  
Kitchen/Dining Area: 17'6 x 15'2 (5.34m x 4.63m)  
Cloakroom

### FIRST FLOOR

Landing  
Bedroom 2: 13'7 x 8'8 (4.14m x 2.64m)  
Bedroom 3: 8'8 x 8'4 (2.64m x 2.54m)  
Bedroom 4: 10'3 x 6'2 (3.13m x 1.88m)  
Bathroom

### SECOND FLOOR

Landing  
Bedroom 1: 15'8 x 12'11 (4.78m x 3.94m)  
En-Suite Shower Room: 6'1 x 5'5 (1.86m x 1.65m)

### OUTSIDE

Rear Garden  
Driveway  
Garage





## Main features

- Sought after well positioned Hermitage Park development
- Larger than average plot size
- Double driveway and spacious garage
- En-suite facilities to bedroom 1
- Local primary and secondary schools within walking distance



### Nearest Schools

Primary Schools: Palace Wood Primary 0.4 miles, St Francis' Catholic Primary, Maidstone 0.5 miles, Allington Primary 0.6 miles

Secondary Schools: St Simon Stock Catholic School 0.5



### Transport Information

Train Stations: Barming 0.5 miles, East Farleigh 1.1 miles, Maidstone Barracks 1.1 miles



### Address

Caldecott Road, Maidstone, Kent ME16



### Directions

For directions to this property please contact us.





Call Maidstone Branch 01622 683737 ■ [wardsofkent.co.uk](https://wardsofkent.co.uk)



- Legal advice should be taken to verify fixtures/fittings, planning, alterations and/or lease details
- Appliances & services are untested, dimensions are approximate and floor plans are not to scale
- Through a Homewise Home For Life Plan people aged 60+ can secure this property for up to 59% less, by purchasing a Lifetime Lease.



13158187/20241109/CV/CF