



**Guide Price**  
**£215,000**

**Freehold**

2x  1x  1x 

**Camden Street,  
Maidstone, Kent ME14**

**OVER 60?**

Secure this property  
for up to **59% less!**

*Wards*  
Helping you move forwards



## Main features

- Pretty character cottage
- Recently fitted kitchen and shower room
- No forward chain
- Town centre position within a quiet side street
- Ideal location for walking to Maidstone East station

## Accommodation

### GROUND FLOOR

Lounge: 11'4 x 11'1 (3.46m x 3.38m)  
Kitchen: 10'9 x 8'8 (3.28m x 2.64m)

### BASEMENT

Cellar: 11'5 x 11'3 (3.48m x 3.43m)

### FIRST FLOOR

Landing  
Bedroom 1: 11'5 x 10'9 (3.48m x 3.28m)  
Bedroom 2 : 8'7 x 8'3 (2.62m x 2.52m)  
Shower Room

### OUTSIDE

Rear Garden

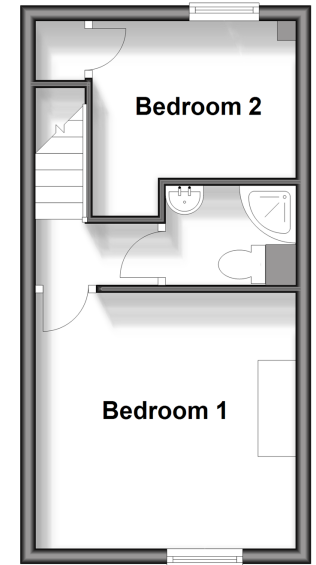
### Ground Floor

Approx. 25.3 sq. metres (271.9 sq. feet)



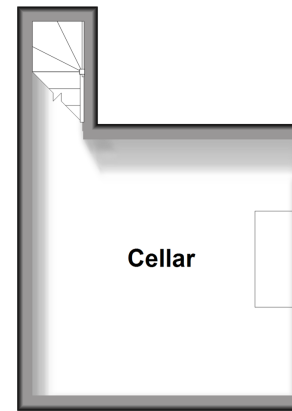
### First Floor

Approx. 23.6 sq. metres (253.8 sq. feet)



### Basement

Approx. 12.4 sq. metres (133.8 sq. feet)



Call Maidstone - 01622 683737 ■ [wardsofkent.co.uk](http://wardsofkent.co.uk)

■ Legal advice should be taken to verify fixtures/fittings, planning, alterations and/or lease details  
■ Through a Homewise Home For Life Plan people aged 60+ can secure this property for up to 59% less, by purchasing a Lifetime Lease.

■ Appliances & services are untested, dimensions are approximate and floor plans are not to scale



13157281/20241008/MB/MB