



OVER 60?

Secure this property
for up to **59% less!**

Price
£325,000

Freehold

3x  1x  1x 

**Rawdon Road,
Maidstone, Kent, ME15**

Wards
Helping you move forwards



Main features

- Bay fronted Victorian house
- Very good condition throughout
- All the bedrooms are generous double sized rooms.
- Private rear garden offering a perfect spot to host family barbecues
- Popular residential location that is close to the town centre and amenities

Accommodation

GROUND FLOOR

Hall

Lounge: 19'9 x 10'11 (6.02m x 3.33m)

Dining Area: 12'10 x 11'3 (3.91m x 3.43m)

Kitchen: 9'10 x 8'1 (3.00m x 2.47m)

Bathroom

SPLIT-LEVEL FIRST FLOOR

Landing

Bedroom 1: 18'2 x 11'5 (5.54m x 3.48m)

Bedroom 2: 15'9 x 11'11 (4.80m x 3.63m)

Bedroom 3: 12'10 x 11'4 (3.91m x 3.46m)

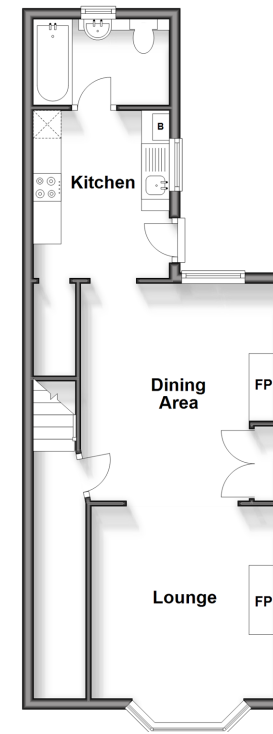
OUTSIDE

Rear Garden

Front Garden

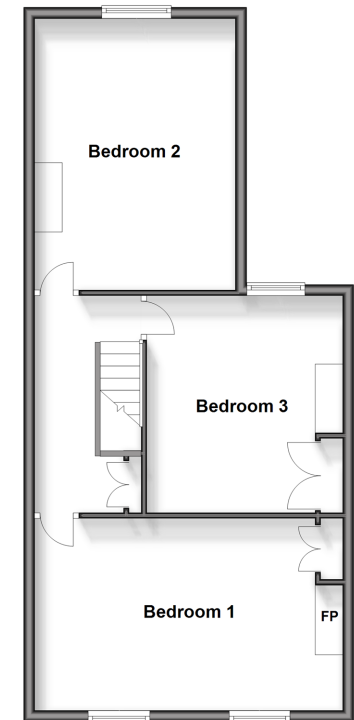
Ground Floor

Approx. 44.7 sq. metres (481.4 sq. feet)



Split Level First Floor

Approx. 59.8 sq. metres (643.8 sq. feet)



Call Maidstone - 01622 683737 ■ wardsofkent.co.uk

■ Legal advice should be taken to verify fixtures/fittings, planning, alterations and/or lease details
 ■ Through a Homewise Home For Life Plan people aged 60+ can secure this property for up to 59% less, by purchasing a Lifetime Lease.

■ Appliances & services are untested, dimensions are approximate and floor plans are not to scale



13157049/20240826/CV/LB01