



OVER 60?

Secure this property
for up to **59% less!**

Price

£185,000

Leasehold

2x  1x  1x 

**Stoneacre Court,
Enterprise Road,
Maidstone, Kent ME15**

Wards
Helping you move forwards



Main features

- Second floor apartment
- Ready to move into and being sold chain free
- Tucked away in a quiet development
- Ideal first time buy or investment opportunity
- Close proximity to the town centre, transport and motorway links

Accommodation

SECOND FLOOR

Hallway

Lounge: 16'4 x 12'4 (4.98m x 3.76m)

Kitchen: 10'10 x 9'6 (3.30m x 2.90m)

Bedroom 1: 13'11 x 9'11 (4.24m x 3.02m)

Bedroom 2: 11'2 x 10'10 (3.41m x 3.30m)

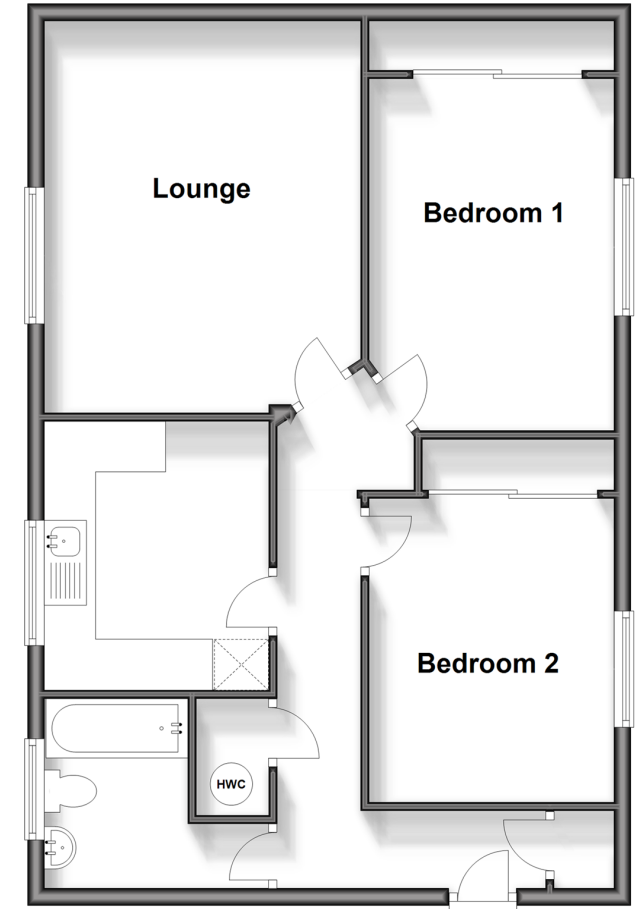
Bathroom: 7'3 x 5'9 (2.21m x 1.75m)

OUTSIDE

Communal Areas

Second Floor

Approx. 69.1 sq. metres (743.9 sq. feet)



Call Maidstone - 01622 683737 ■ wardsofkent.co.uk

- Legal advice should be taken to verify fixtures/fittings, planning, alterations and/or lease details
- Appliances & services are untested, dimensions are approximate and floor plans are not to scale
- Through a Homewise Home For Life Plan people aged 60+ can secure this property for up to 59% less, by purchasing a Lifetime Lease.



13156889/20240913/SS1/LB01