



**Price**  
**£290,000**

**Freehold**

3x  1x  2x 

**Victoria Street,  
Maidstone, Kent ME16**

**OVER 60?**

Secure this property  
for up to **59% less!**

*Wards*  
Helping you move forwards



## Main features

- Victorian character house
- Potential to extend, subject to planning permission
- Large garden and rear access
- Prime location for commuting, walking distance to the station and town centre
- Sought after catchment area, with great schools and bus routes

## Accommodation

### GROUND FLOOR

Entrance Hall  
 Lounge: 14'2 x 10'4 (4.32m x 3.15m)  
 Dining Room: 12'9 x 10'6 (3.89m x 3.20m)  
 Kitchen: 10'5 x 7'9 (3.18m x 2.36m)  
 Rear Lobby  
 Bathroom  
 Separate Toilet

### BASEMENT

Cellar: 13'5 x 11'5 (4.09m x 3.48m)

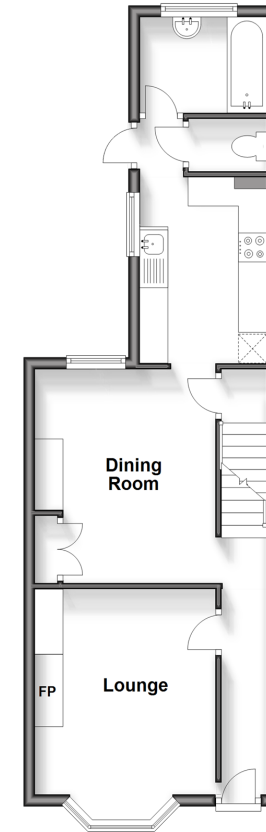
### FIRST FLOOR

Landing  
 Bedroom 1: 13'4 x 11'4 (4.07m x 3.46m)  
 Bedroom 2: 13'0 x 8'5 (3.97m x 2.57m)  
 Bedroom 3: 7'10 x 5'9 (2.39m x 1.75m)  
 En-Suite Shower Room

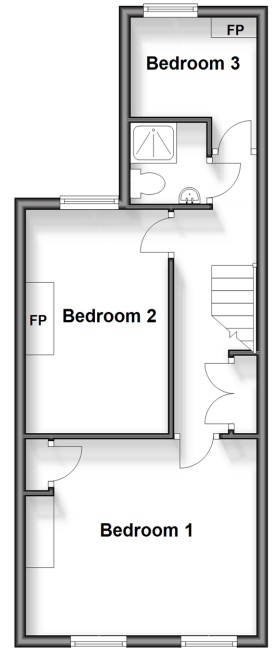
### OUTSIDE

Rear Garden  
 Front Garden

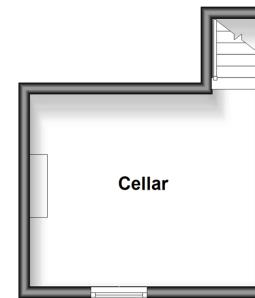
**Ground Floor**  
 Approx. 44.2 sq. metres (475.5 sq. feet)



**First Floor**  
 Approx. 37.8 sq. metres (406.8 sq. feet)



**Basement**  
 Approx. 14.8 sq. metres (159.4 sq. feet)



**Call Maidstone - 01622 683737 ■ [wardsofkent.co.uk](http://wardsofkent.co.uk)**

- Legal advice should be taken to verify fixtures/fittings, planning, alterations and/or lease details
- Appliances & services are untested, dimensions are approximate and floor plans are not to scale
- Through a Homewise Home For Life Plan people aged 60+ can secure this property for up to 59% less, by purchasing a Lifetime Lease.



13157636/20241001/MB/CF