



**Price**  
**£350,000**

**Freehold**

3x  1x  2x 

**Loose Road, Maidstone,  
Kent ME15**

*Wards*  
Helping you move forwards





## Main features

- Chain free house
- Conservatory leading onto a large rear garden
- Close to town centre
- An abundance of period features throughout
- A short walk to local shops and transport links

## Accommodation

### GROUND FLOOR

Hallway  
 Cloakroom  
 Dining Room: 11'1 x 11'0 (3.38m x 3.36m)  
 Lounge: 19'9 x 10'2 (6.02m x 3.10m)  
 Conservatory: 10'0 x 5'0 (3.05m x 1.53m)  
 Kitchen: 16'5 x 8'4 (5.01m x 2.54m)

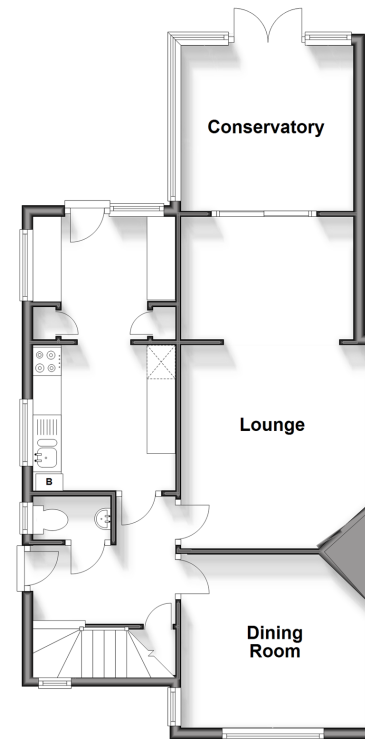
### FIRST FLOOR

Landing  
 Bedroom 1: 11'8 x 10'4 (3.56m x 3.15m)  
 Bedroom 2: 12'4 x 8'0 (3.76m x 2.44m)  
 Bedroom 3: 11'9 x 8'5 (3.58m x 2.57m)  
 Bathroom

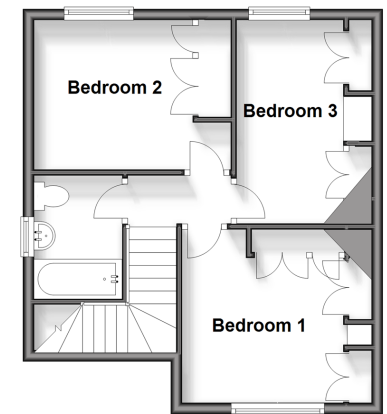
### OUTSIDE

Rear Garden  
 Front Garden

**Ground Floor**  
 Approx. 60.1 sq. metres (647.0 sq. feet)



**First Floor**  
 Approx. 37.9 sq. metres (408.0 sq. feet)



Call Maidstone - 01622 683737 ■ [wardsofkent.co.uk](http://wardsofkent.co.uk)

■ Legal advice should be taken to verify fixtures/fittings, planning, alterations and/or lease details

■ Appliances & services are untested, dimensions are approximate and floor plans are not to scale



13158320/20240816/CV/LB01