



**OVER 60?**

Secure this property  
for up to **59% less!**

**Price**

**£225,000**

**Leasehold**

2x  2x  1x 

**Glebe Lane, Barming,  
Maidstone, Kent ME16**

*Wards*  
Helping you move forwards





## Main features

- Chain-free second floor apartment
- Spacious accommodation
- Prime Location for commuting, short distance to the local station and town centre
- Garage with parking
- Communal garden space, only shared by the 2 other apartments, provides privacy and a bonus

## Accommodation

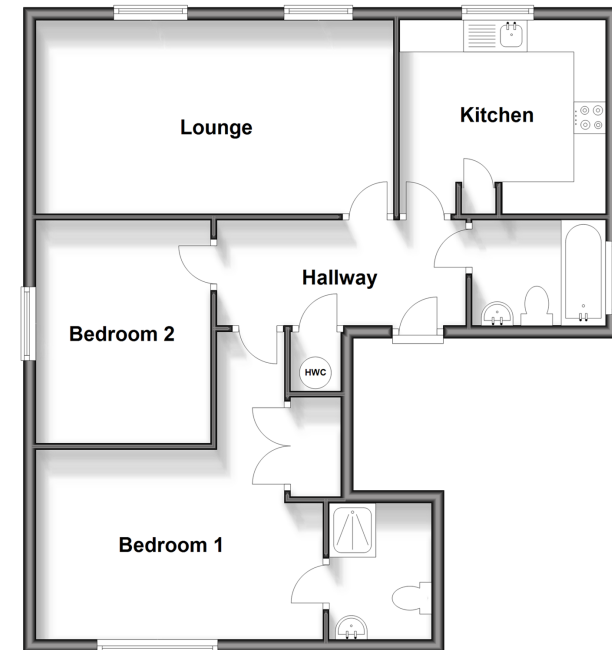
### SECOND FLOOR

Hallway: 12'9 x 5'4 (3.89m x 1.63m)  
 Lounge: 18'4 x 9'9 (5.59m x 2.97m)  
 Kitchen: 10'6 x 9'6 (3.20m x 2.90m)  
 Bedroom 1: 14'8 x 10'3 (4.47m x 3.13m)  
 En-Suite Shower Room: 6'8 x 5'3 (2.03m x 1.60m)  
 Bedroom 2: 11'5 x 8'4 (3.48m x 2.54m)  
 Bathroom: 7'8 x 5'4 (2.34m x 1.63m)

### OUTSIDE

Communal Gardens  
 Allocated Parking  
 Garage

**Second Floor**  
 Approx. 69.8 sq. metres (751.1 sq. feet)



**Call Maidstone - 01622 683737 ■ wardsofkent.co.uk**

■ Legal advice should be taken to verify fixtures/fittings, planning, alterations and/or lease details  
 ■ Through a Homewise Home For Life Plan people aged 60+ can secure this property for up to 59% less, by purchasing a Lifetime Lease.

■ Appliances & services are untested, dimensions are approximate and floor plans are not to scale



13158302/20241001/CF/CF