



Price
£275,000

Freehold

3x  1x  1x 

**Edna Road, Maidstone,
Kent ME14**

OVER 60?

Secure this property
for up to **59% less!**

Wards
Helping you move forwards



Main features

- Attractive family house
- Lovely well maintained rear garden
- No onward chain
- Recently updated ground floor shower room
- Convenient location, ideal for schools, access to the motorways and Maidstone East station

Accommodation

GROUND FLOOR

- Hallway
- Shower Room: 6'4 x 5'5 (1.93m x 1.65m)
- Lounge: 13'0 x 11'7 (3.97m x 3.53m)
- Kitchen
- Conservatory: 12'0 x 6'9 (3.66m x 2.06m)

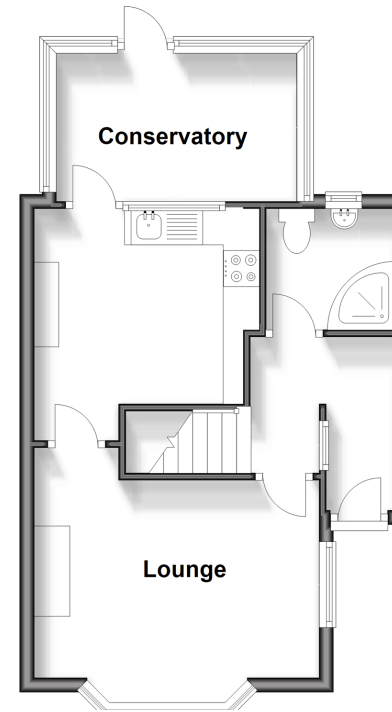
FIRST FLOOR

- Landing
- Bedroom 1: 13'2 x 13'0 (4.02m x 3.97m)
- Bedroom 2: 9'9 x 9'4 (2.97m x 2.85m)
- Bedroom 3: 7'0 x 5'9 (2.14m x 1.75m)

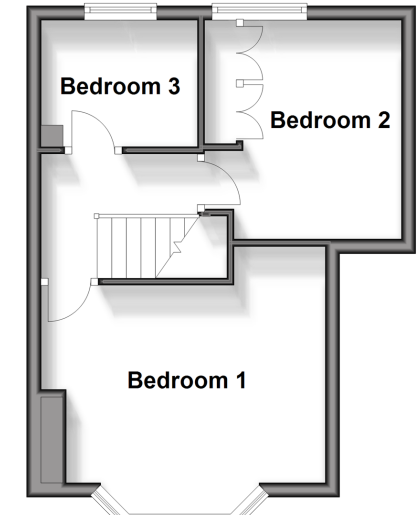
OUTSIDE

- Rear Garden
- Front Garden
- Driveway
- Garage

Ground Floor
Approx. 37.8 sq. metres (407.3 sq. feet)



First Floor
Approx. 29.1 sq. metres (312.7 sq. feet)



Call Maidstone - 01622 683737 ■ wardsofkent.co.uk

■ Legal advice should be taken to verify fixtures/fittings, planning, alterations and/or lease details
 ■ Through a Homewise Home For Life Plan people aged 60+ can secure this property for up to 59% less, by purchasing a Lifetime Lease.

■ Appliances & services are untested, dimensions are approximate and floor plans are not to scale



13158293/20240724/SS1/MB