



OVER 60?

Secure this property
for up to **59% less!**

Price
£290,000

Freehold

3x  2x  2x 

**Peacock Mews,
Maidstone, Kent, ME16**

Wards
Helping you move forwards



Main features

- Well presented throughout
- Popular residential location
- Fully double glazed throughout
- Good sized double bedrooms with a fourth being a great option for a study
- Close to local amenities, transport links, motorways and town centre

Accommodation

GROUND FLOOR

Entrance Hall
 Lounge: 17'8 x 12'10 (5.39m x 3.91m)
 Kitchen: 11'0 x 6'3 (3.36m x 1.91m)

FIRST FLOOR

Landing
 Bedroom 2: 15'2 x 6'4 (4.63m x 1.93m)
 Bedroom 3: 12'4 x 7'0 (3.76m x 2.14m)
 Bathroom

SECOND FLOOR

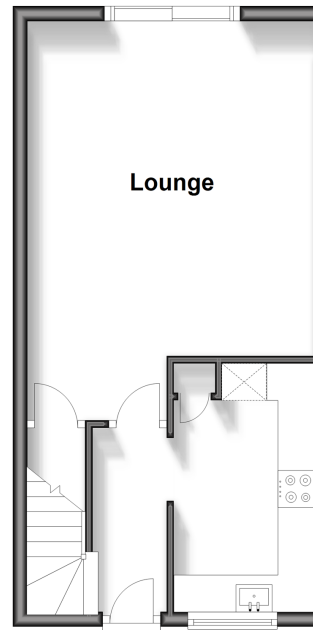
Landing
 Bedroom 1: 16'9 x 13'2 (5.11m x 4.02m)
 En-Suite Shower Room
 Study: 8'11 x 4'5 (2.72m x 1.35m)

OUTSIDE

Front & Rear Gardens
 Garage

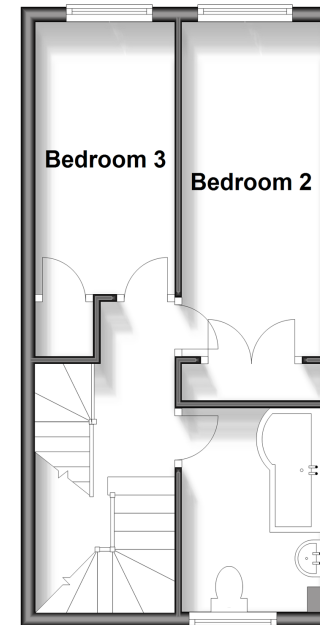
Ground Floor

Approx. 31.7 sq. metres (341.4 sq. feet)



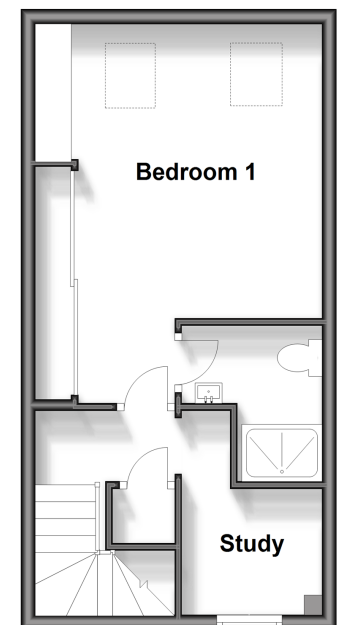
First Floor

Approx. 31.5 sq. metres (339.0 sq. feet)



Second Floor

Approx. 31.6 sq. metres (339.7 sq. feet)



Call Maidstone - 01622 683737 ■ wardsofkent.co.uk

■ Legal advice should be taken to verify fixtures/fittings, planning, alterations and/or lease details
 ■ Through a Homewise Home For Life Plan people aged 60+ can secure this property for up to 59% less, by purchasing a Lifetime Lease.

■ Appliances & services are untested, dimensions are approximate and floor plans are not to scale



13158232/20240831/CV/LB01